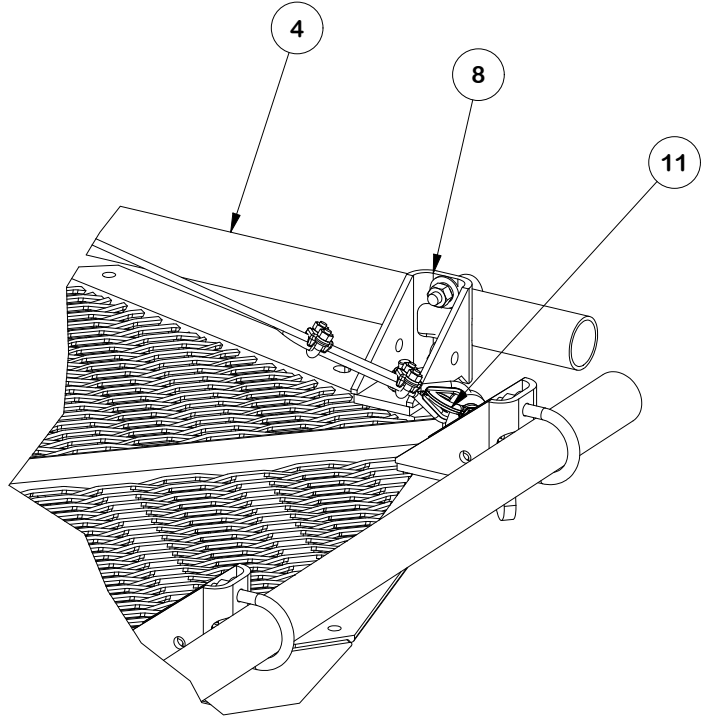
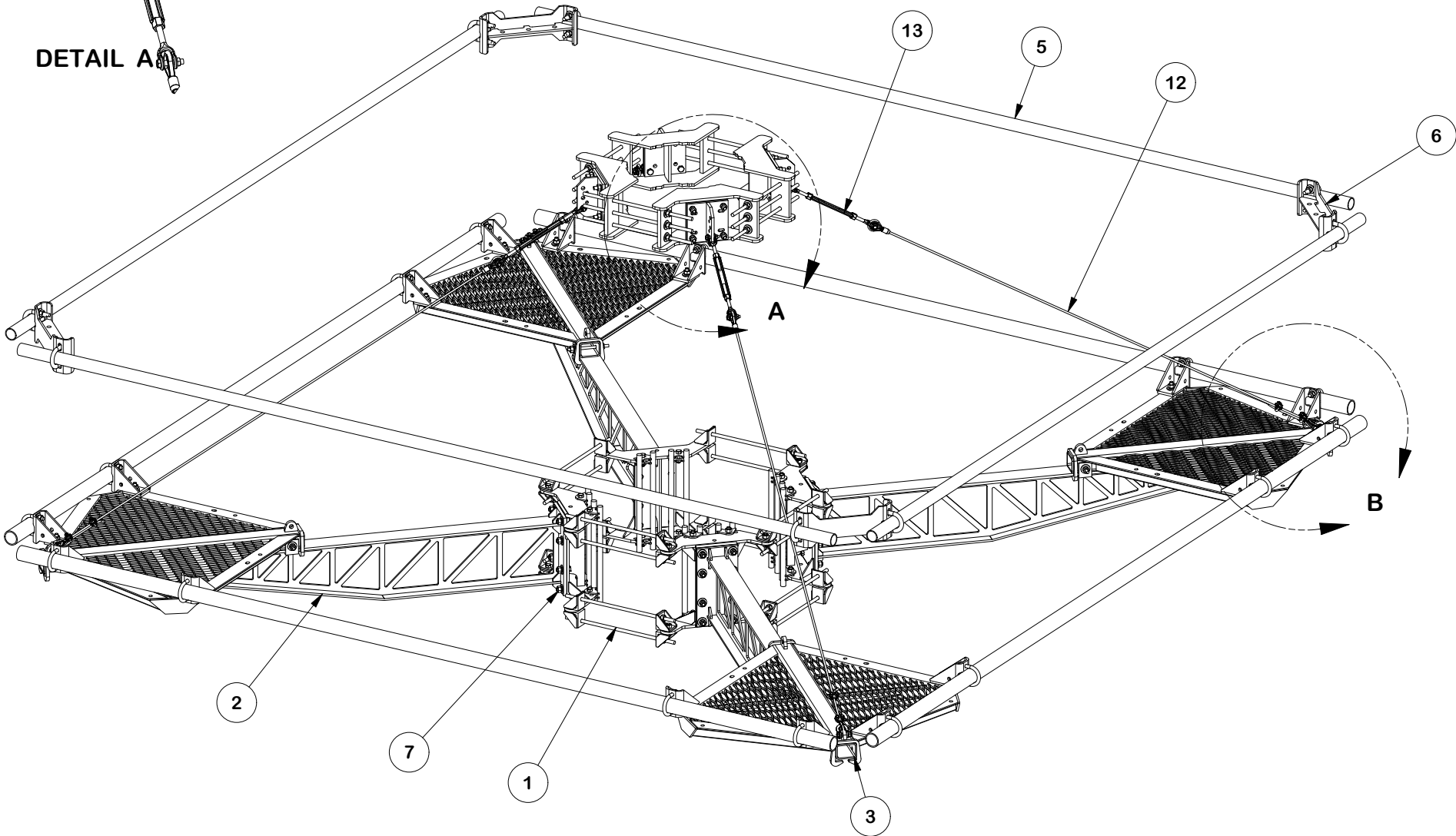


PARTS LIST									
ITEM	QTY	PART NO.	BOX NO.	PART DESCRIPTION	LENGTH	UNIT WT.	NET WT.		
1	1	FLX4-HD		FLEXIBLE RING MOUNT 4-SIDED HEAVY DUTY ASSEMBLY		504.00	504.00		
2	4	X-LPP-SA14		SIDE ARM WELDMENT FOR 14' LOW PROFILE PLATFORM		151.68	606.71		
3	4	X-LPP-CW		LOW PROFILE PLATFORM CORNER WELDMENT		198.75	795.01		
4	4	P30180		2-7/8" O.D. x 180" SCH. 40 PIPE (A53 Gr.B Fy=35 ksi min.)	180 in	87.10	348.40		
5	4	P2180		2-3/8" OD X 180" Sch 40 Galvanized Pipe (A53 Gr.B Fy=35 ksi min.)		59.59	238.36		
6	4	F4HR	P-F4HR	FOUR SIDED CORNER WELDMENT KIT		24.78	99.11		
7	4	LPPSA-HW	P-LPPSA-HW	TRUSS ARM CONNECTION HARDWARE		4.14	16.57		
8	4	FCWHW	P-FCWHW	FORTRESS CORNER WELDMENT HARDWARE KIT		42.93	171.72		
9	1	UQB4		UQB4		332.41	332.41		
10	4	X-TBW		FORTRESS T-BRACKET WELDMENT		13.60	54.40		
11	4	320751-I		1/2" CHAIN SHACKLE		0.76	3.05		
12	4	CK-3815		3/8" X 15'-0" CABLE KIT		8.56	34.24		
13	4	320601-I		5/8" TURNBUCKLE		2.63	10.53		
14	16	G58234		5/8" UNC HEX BOLT (A325)	2 3/4 in	0.36	5.69		
15	16	G58LW		5/8" HDG LOCKWASHER		0.03	0.42		
16	16	G58NUT		5/8" HDG HEAVY 2H HEX NUT		0.13	2.08		
							TOTAL WT. #	2769.45	



FINISH:
HOT DIP GALVANIZED.

TOLERANCE NOTES

TOLERANCES ON DIMENSIONS, UNLESS OTHERWISE NOTED ARE:
SAWED, SHEARED AND GAS CUT EDGES ($\pm 0.030"$)
DRILLED AND GAS CUT HOLES ($\pm 0.030"$) - NO CONING OF HOLES
LASER CUT EDGES AND HOLES ($\pm 0.010"$) - NO CONING OF HOLES
BENDS AND ANGLES ARE $\pm 1/2$ DEGREE
ALL OTHER MACHINING ($\pm 0.030"$)
ALL OTHER ASSEMBLY ($\pm 0.060"$)

PATENT INFORMATION: WWW.SITEPRO1.COM/PATENTS

PROPRIETARY NOTE:
THE DATA AND TECHNIQUES CONTAINED IN THIS DRAWING ARE PROPRIETARY INFORMATION OF VALMONT INDUSTRIES AND CONSIDERED A TRADE SECRET. ANY USE OR DISCLOSURE WITHOUT THE CONSENT OF VALMONT INDUSTRIES IS STRICTLY PROHIBITED.

DESCRIPTION
14' FLEX FORTRESS™ QUAD-PLATFORM MOUNT
WITH SUPPORT RAIL
(NO PIPE/HARDWARE)

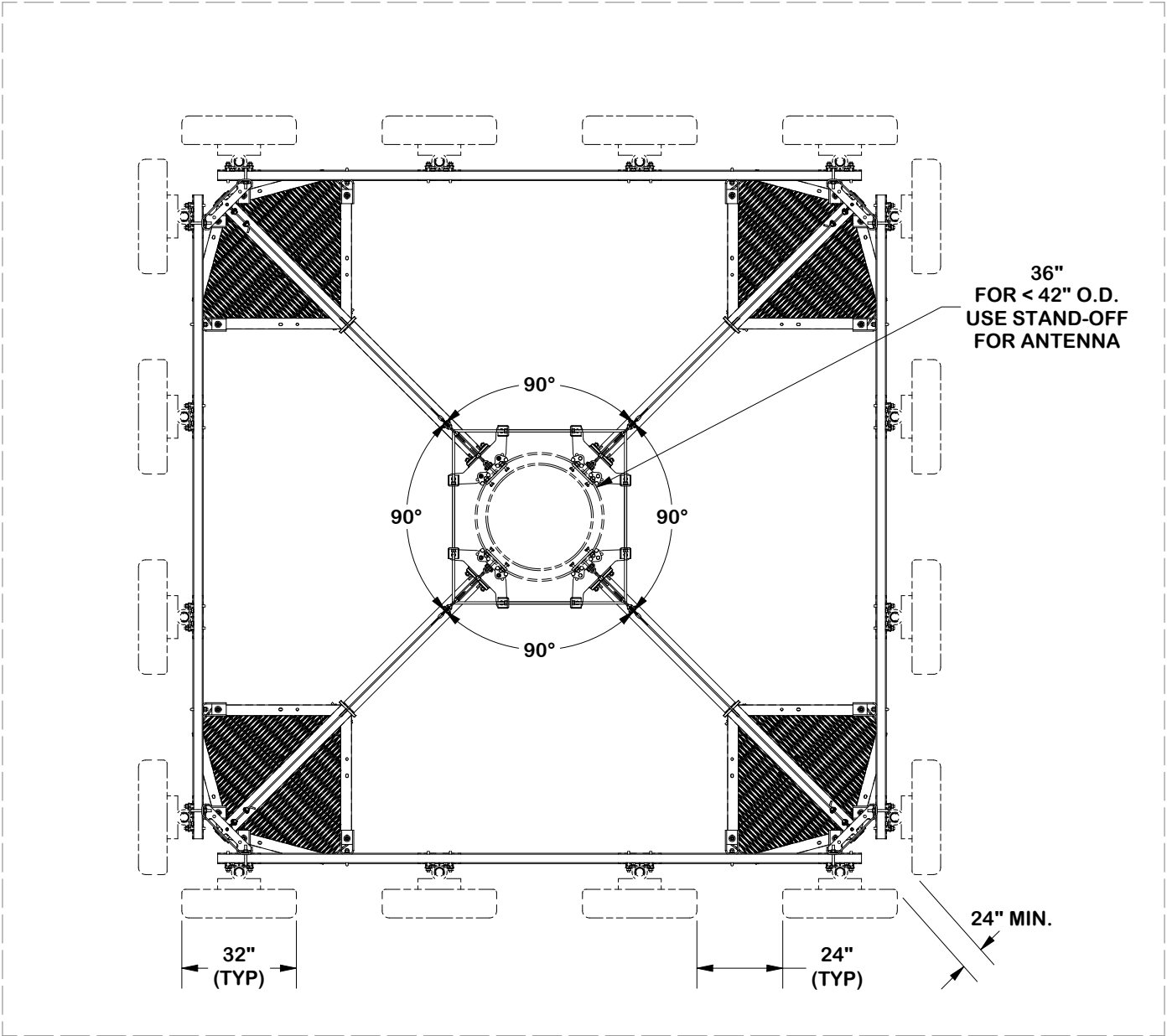
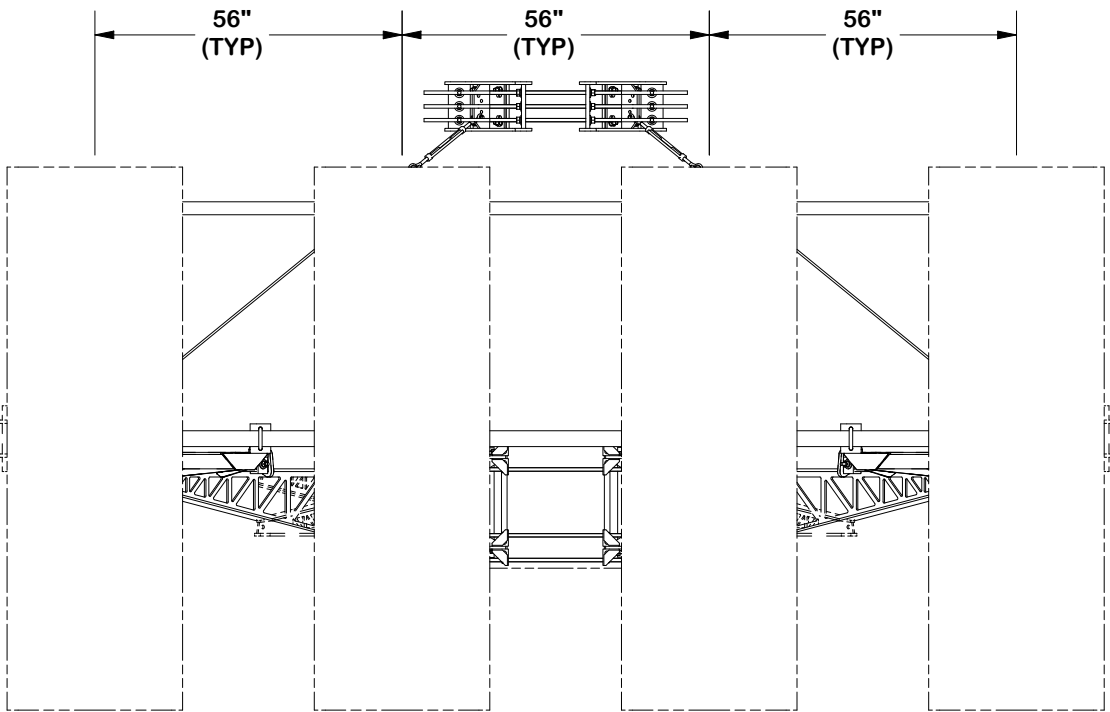
CPD NO. SP1		DRAWN BY ADB 1/8/2025		ENG. APPROVAL 1/17/2025	
CLASS 87	SUB 02	DRAWING USAGE CUSTOMER		CHECKED BY JET	1/17/2025



Engineering
Support Team:
sp1engineering@valmont.com

PART NO. FX4P14-NPNH	1 OF 17 PAGE
DWG. NO. FX4P14-NPNH	

4 ANTENNA FORTRESS LAYOUT



SEPARATION GUIDELINE

TOLERANCE NOTES

TOLERANCES ON DIMENSIONS, UNLESS OTHERWISE NOTED ARE:
SAWED, SHEARED AND GAS CUT EDGES ($\pm 0.030"$)
DRILLED AND GAS CUT HOLES ($\pm 0.030"$) - NO CONING OF HOLES
LASER CUT EDGES AND HOLES ($\pm 0.010"$) - NO CONING OF HOLES
BENDS AND ANGLES ARE $\pm 1/2$ DEGREE
ALL OTHER MACHINING ($\pm 0.030"$)
ALL OTHER ASSEMBLY ($\pm 0.060"$)

PATENT INFORMATION: WWW.SITEPRO1.COM/PATENTS

PROPRIETARY NOTE:
THE DATA AND TECHNIQUES CONTAINED IN THIS DRAWING ARE PROPRIETARY INFORMATION OF VALMONT INDUSTRIES AND CONSIDERED A TRADE SECRET. ANY USE OR DISCLOSURE WITHOUT THE CONSENT OF VALMONT INDUSTRIES IS STRICTLY PROHIBITED.

DESCRIPTION
14' FLEX FORTRESS™ QUAD-PLATFORM MOUNT
WITH SUPPORT RAIL
(NO PIPE/HARDWARE)

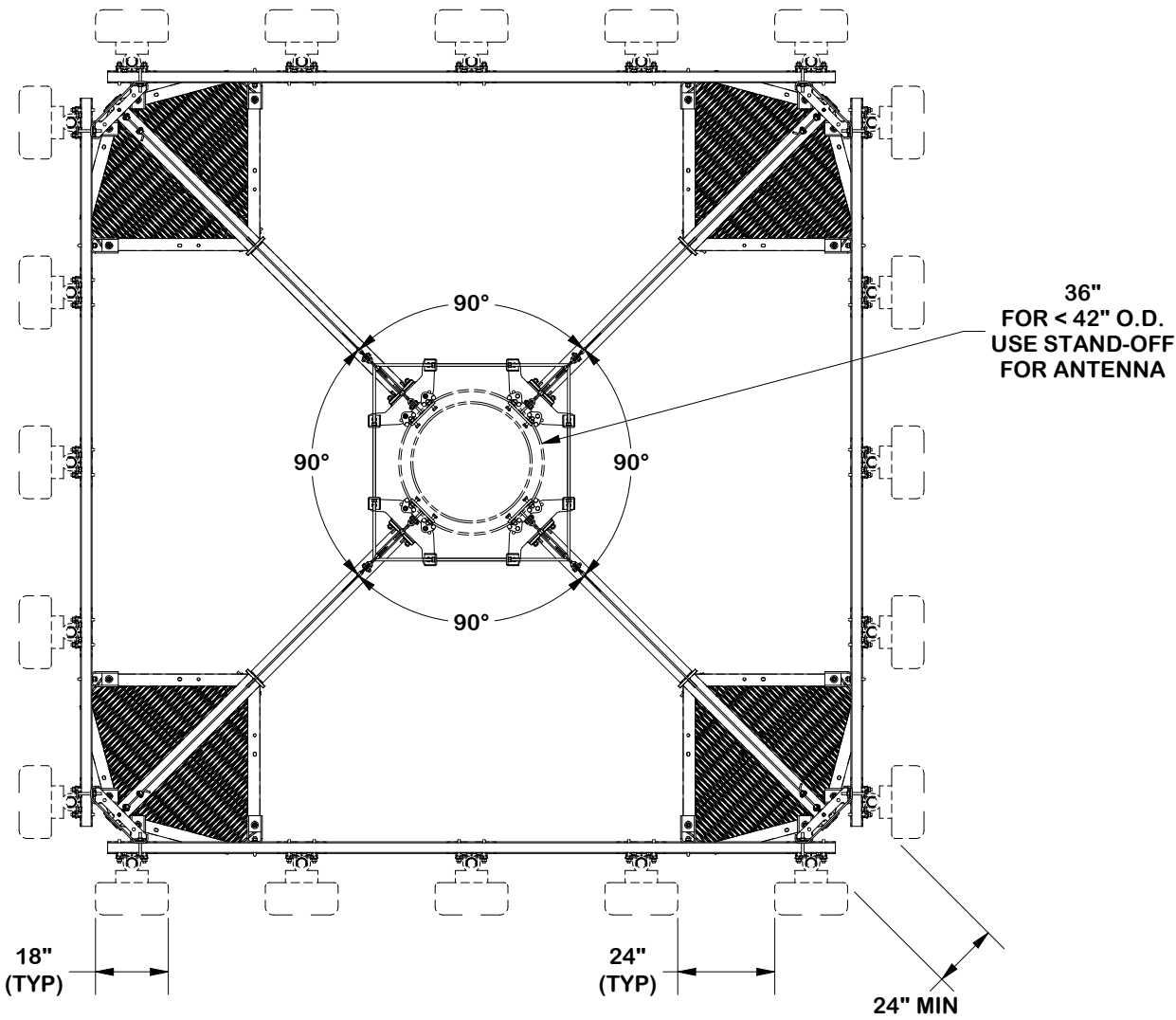
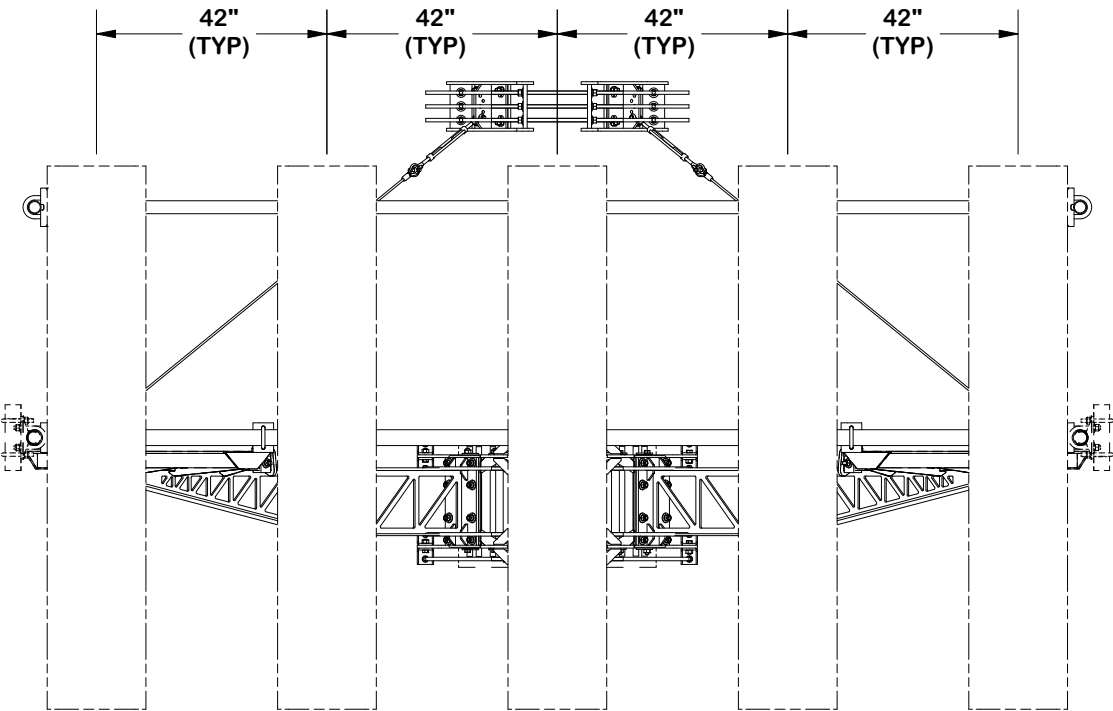
CPD NO. SP1		DRAWN BY ADB 1/8/2025	ENG. APPROVAL 1/17/2025
CLASS 87	SUB 02	DRAWING USAGE CUSTOMER	CHECKED BY JET 1/17/2025



Engineering
Support Team:
sp1engineering@valmont.com

PART NO. FX4P14-NPNH
DWG. NO. FX4P14-NPNH

5 ANTENNA FORTRESS LAYOUT



SEPARATION GUIDELINE

TOLERANCE NOTES

TOLERANCES ON DIMENSIONS, UNLESS OTHERWISE NOTED ARE:
SAWED, SHEARED AND GAS CUT EDGES ($\pm 0.030"$)
DRILLED AND GAS CUT HOLES ($\pm 0.030"$) - NO CONING OF HOLES
LASER CUT EDGES AND HOLES ($\pm 0.010"$) - NO CONING OF HOLES
BENDS AND ANGLES ARE $\pm 1/2$ DEGREE
ALL OTHER MACHINING ($\pm 0.030"$)
ALL OTHER ASSEMBLY ($\pm 0.060"$)

PATENT INFORMATION: WWW.SITEPRO1.COM/PATENTS

PROPRIETARY NOTE:
THE DATA AND TECHNIQUES CONTAINED IN THIS DRAWING ARE PROPRIETARY INFORMATION OF VALMONT INDUSTRIES AND CONSIDERED A TRADE SECRET. ANY USE OR DISCLOSURE WITHOUT THE CONSENT OF VALMONT INDUSTRIES IS STRICTLY PROHIBITED.

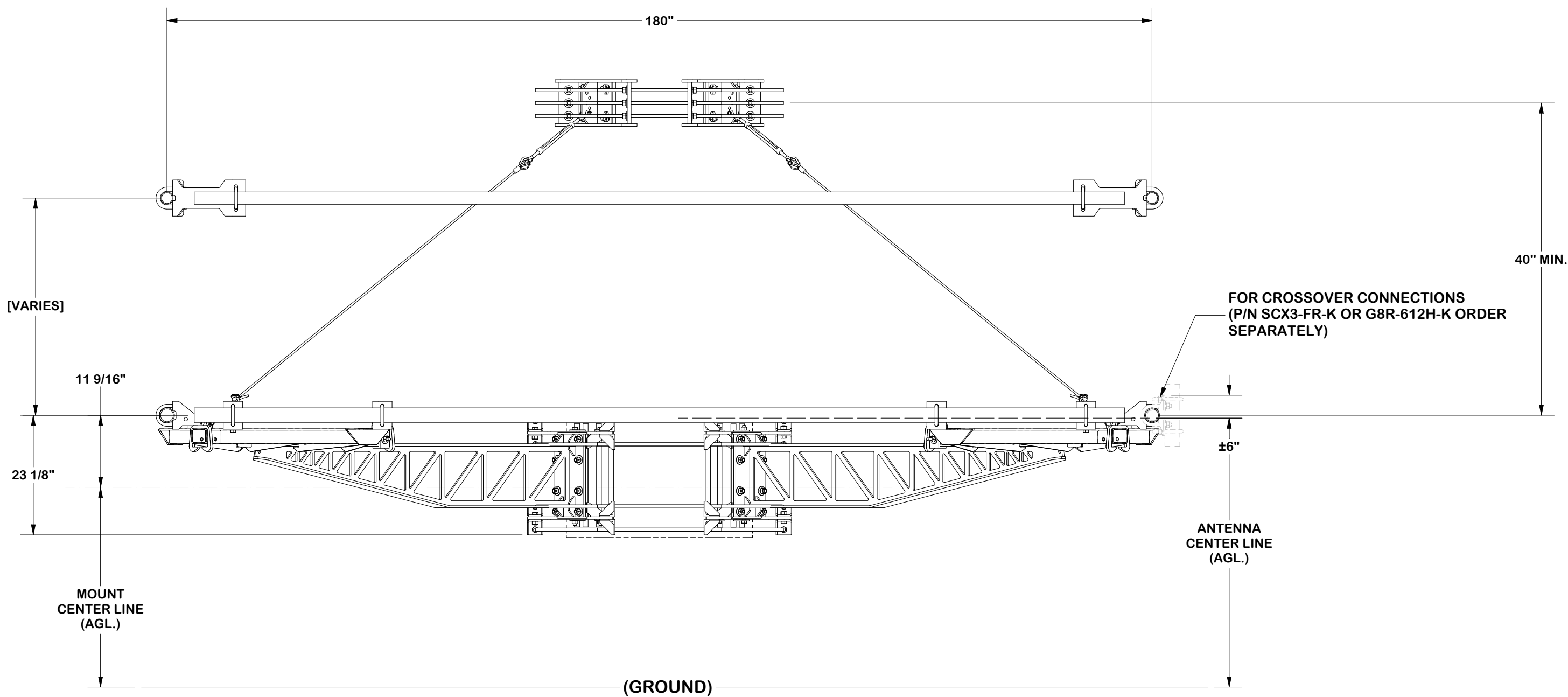
DESCRIPTION
14' FLEX FORTRESS™ QUAD-PLATFORM MOUNT
WITH SUPPORT RAIL
(NO PIPE/HARDWARE)

CPD NO. SP1		DRAWN BY ADB 1/8/2025	ENG. APPROVAL 1/17/2025
CLASS 87	SUB 02	DRAWING USAGE CUSTOMER	CHECKED BY JET 1/17/2025



Engineering
Support Team:
sp1engineering@valmont.com

PART NO. FX4P14-NPNH
DWG. NO. FX4P14-NPNH



MOUNTING GUIDELINE

TOLERANCE NOTES

TOLERANCES ON DIMENSIONS, UNLESS OTHERWISE NOTED ARE:
SAWED, SHEARED AND GAS CUT EDGES ($\pm 0.030"$)
DRILLED AND GAS CUT HOLES ($\pm 0.030"$) - NO CONING OF HOLES
LASER CUT EDGES AND HOLES ($\pm 0.010"$) - NO CONING OF HOLES
BENDS AND ANGLES ARE $\pm 1/2$ DEGREE
ALL OTHER MACHINING ($\pm 0.030"$)
ALL OTHER ASSEMBLY ($\pm 0.060"$)

PATENT INFORMATION: WWW.SITEPRO1.COM/PATENTS

PROPRIETARY NOTE:
THE DATA AND TECHNIQUES CONTAINED IN THIS DRAWING ARE PROPRIETARY INFORMATION OF VALMONT INDUSTRIES AND CONSIDERED A TRADE SECRET. ANY USE OR DISCLOSURE WITHOUT THE CONSENT OF VALMONT INDUSTRIES IS STRICTLY PROHIBITED.

DESCRIPTION
14' FLEX FORTRESS™ QUAD-PLATFORM MOUNT
WITH SUPPORT RAIL
(NO PIPE/HARDWARE)

CPD NO. SP1		DRAWN BY ADB 1/8/2025		ENG. APPROVAL 1/17/2025	
CLASS 87	SUB 02	DRAWING USAGE CUSTOMER		CHECKED BY JET	1/17/2025

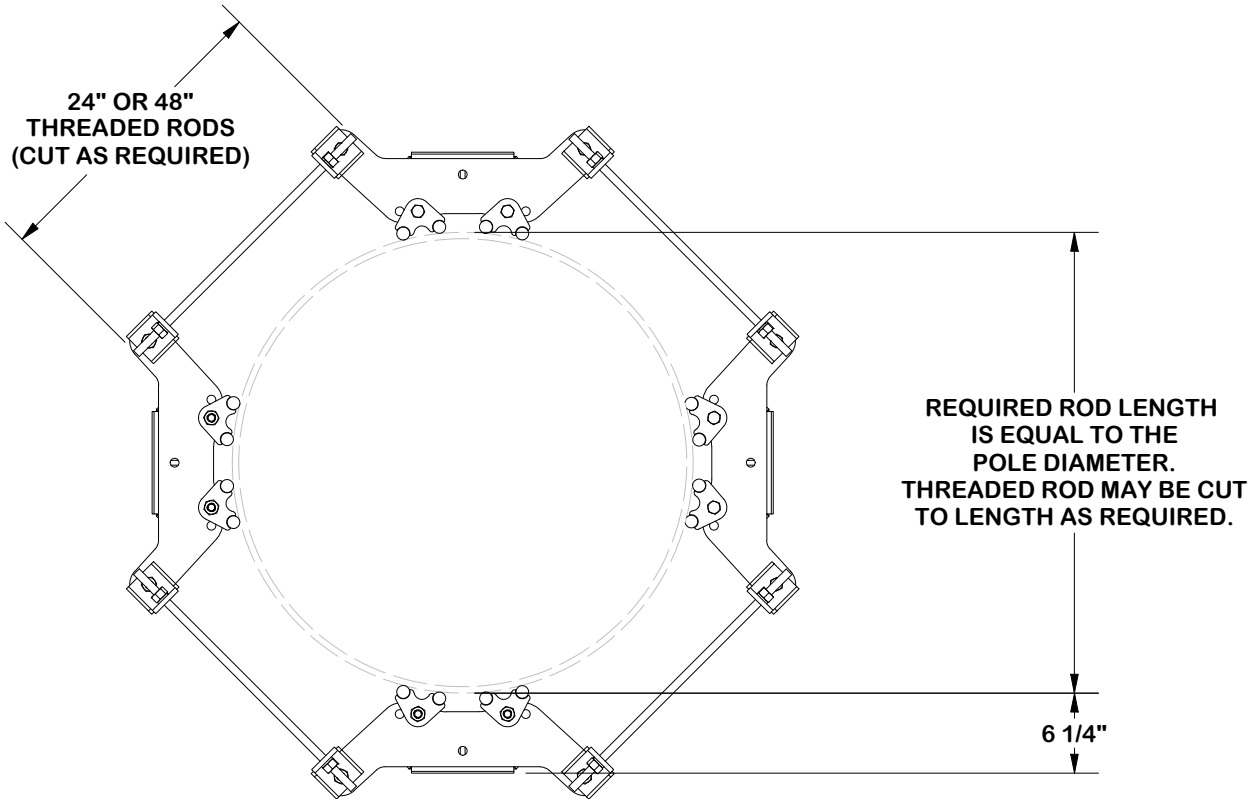


Engineering
Support Team:
sp1engineering@valmont.com

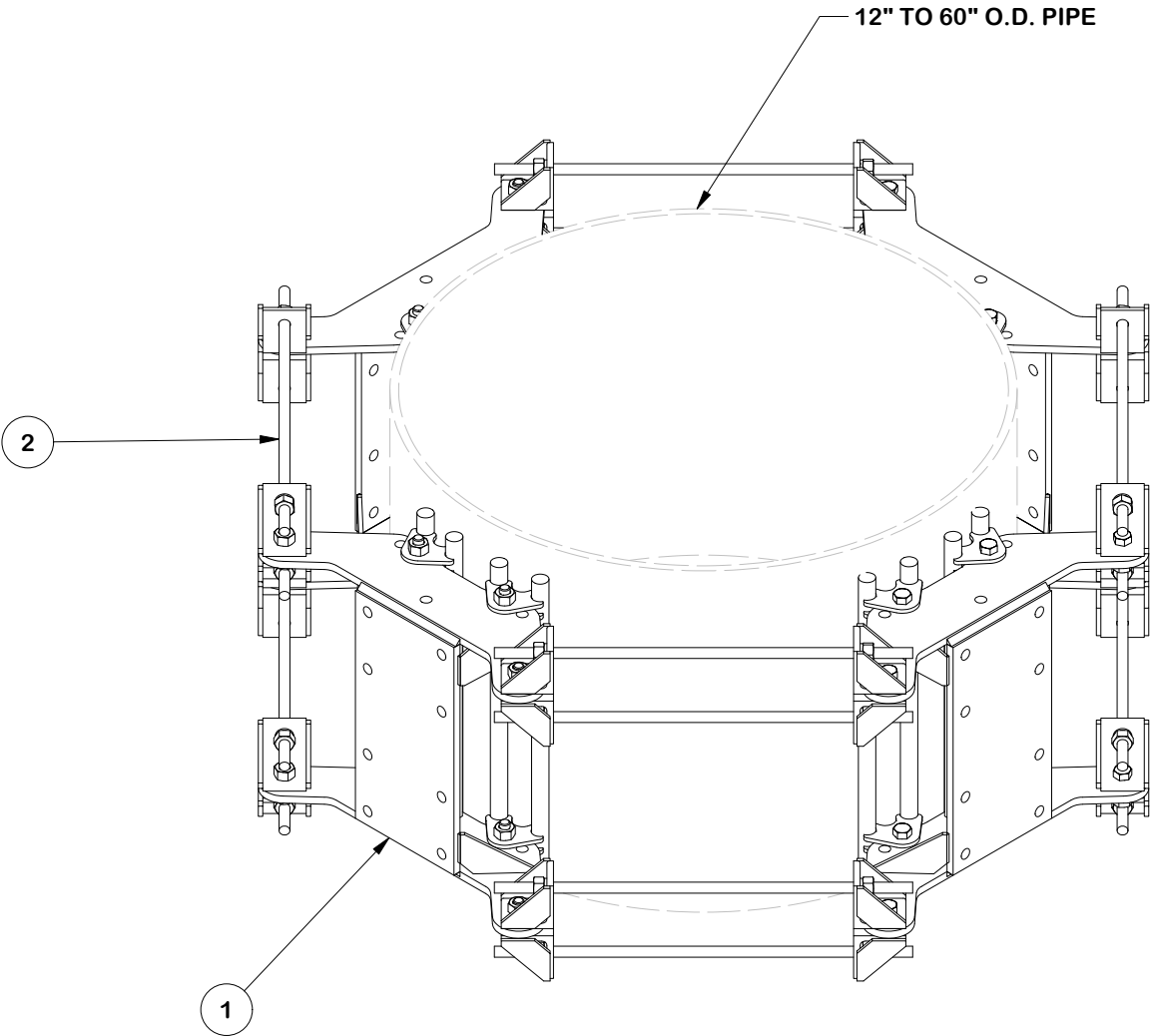
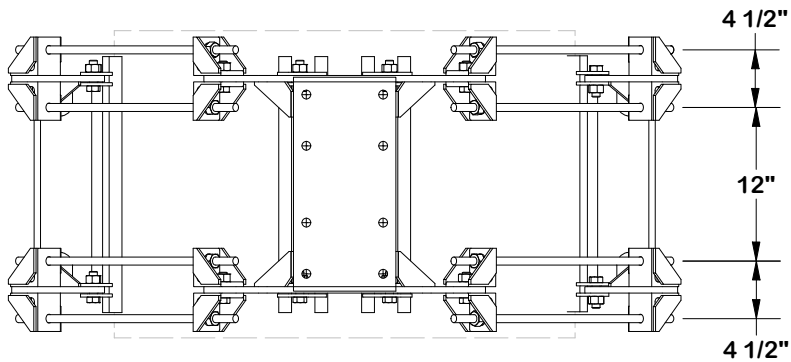
PART NO.	FX4P14-NPNH
DWG. NO.	FX4P14-NPNH

HEAVY STAMP
PART NUMBER

PARTS LIST						
ITEM	QTY	PART NO.	BOX NO.	PART DESCRIPTION	UNIT WT.	NET WT.
1	4	FLX-HDSS		FLEXIBLE RING MOUNT HEAVY-DUTY SINGLE SECTOR ASSEMBLY	98.32	393.30
2	4	HDRM-HW		FLEXIBLE RING MOUNT HARWARE KIT	27.68	110.70
					TOTAL WT. #	504.00



NOTE:
COMPATIBLE WITH 6" X 6" HOLE PATTERN AND
FORTRESS™ STANDOFF ARM



FINISH:
HOT DIP GALVANIZED.

TOLERANCE NOTES

TOLERANCES ON DIMENSIONS, UNLESS OTHERWISE NOTED ARE:
SAWED, SHEARED AND GAS CUT EDGES ($\pm 0.030"$)
DRILLED AND GAS CUT HOLES ($\pm 0.030"$) - NO CONING OF HOLES
LASER CUT EDGES AND HOLES ($\pm 0.010"$) - NO CONING OF HOLES
BENDS AND ANGLES ARE $\pm 1/2$ DEGREE
ALL OTHER MACHINING ($\pm 0.030"$)
ALL OTHER ASSEMBLY ($\pm 0.060"$)

PATENT INFORMATION: WWW.SITEPRO1.COM/PATENTS

PROPRIETARY NOTE:
THE DATA AND TECHNIQUES CONTAINED IN THIS DRAWING ARE PROPRIETARY INFORMATION OF VALMONT INDUSTRIES AND CONSIDERED A TRADE SECRET. ANY USE OR DISCLOSURE WITHOUT THE CONSENT OF VALMONT INDUSTRIES IS STRICTLY PROHIBITED.

DESCRIPTION
14' FLEX FORTRESS™ QUAD-PLATFORM MOUNT
WITH SUPPORT RAIL
(NO PIPE/HARDWARE)

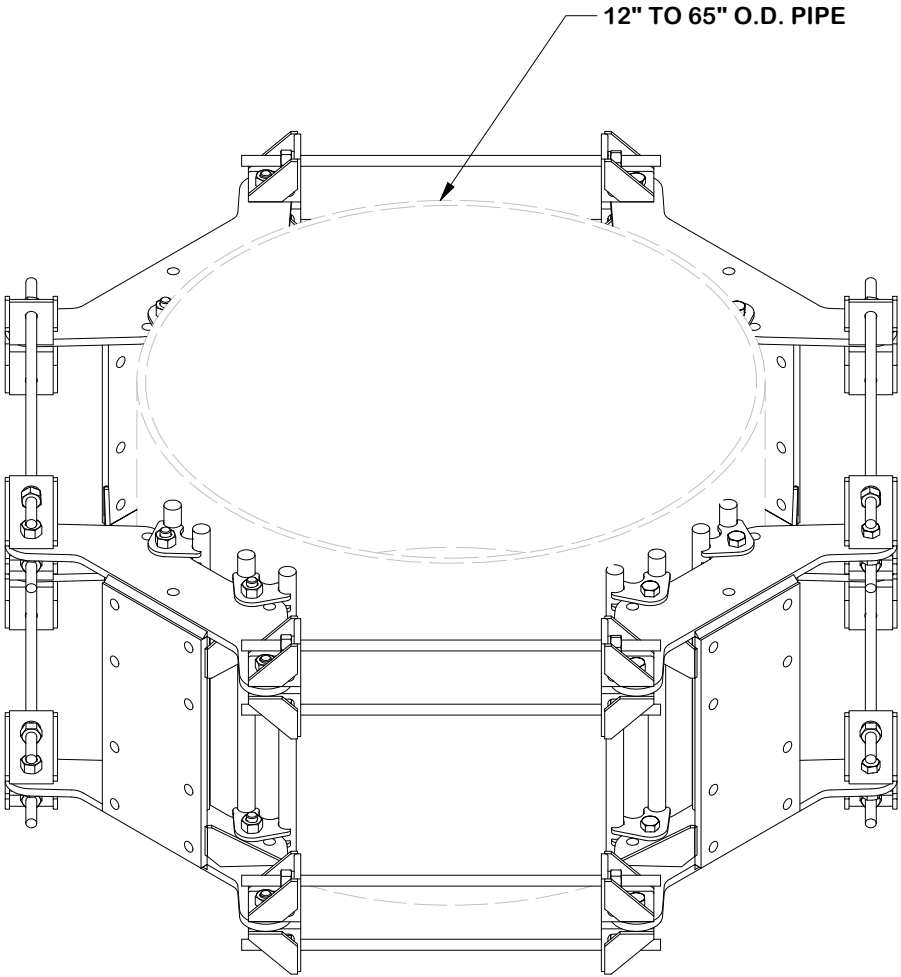
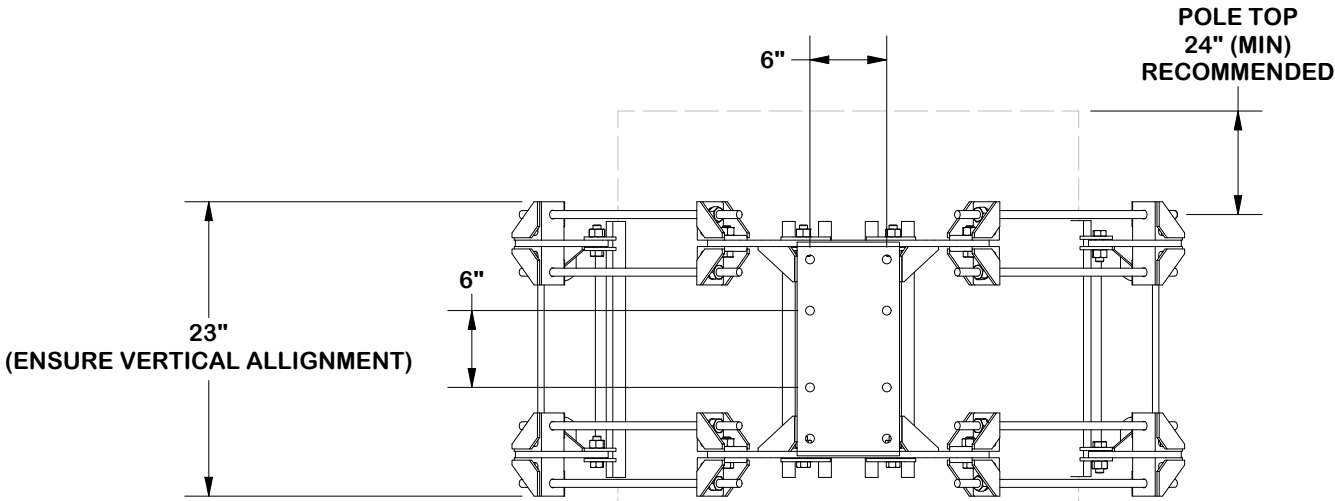
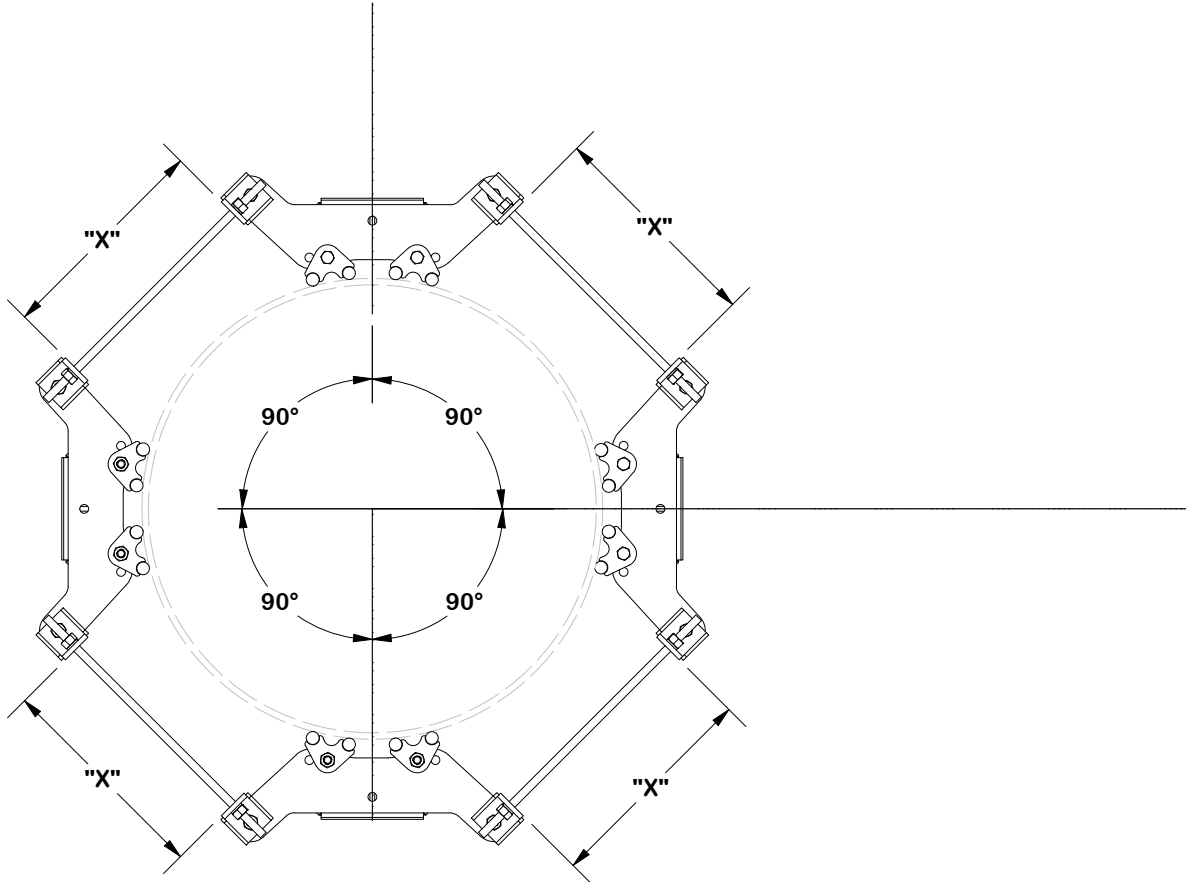
CPD NO. SP1		DRAWN BY ADB 1/8/2025		ENG. APPROVAL 1/17/2025	
CLASS 87	SUB 02	DRAWING USAGE CUSTOMER		CHECKED BY JET	1/17/2025



Engineering
Support Team:
sp1engineering@valmont.com

PART NO. FLX4-HD	PAGE 5 OF 17
DWG. NO. FX4P14-NPNH	

NOTE:
ENSURE EQUAL DISTANCE
BETWEEN BRACKETS "X"
AND AT 120° APART



TOLERANCE NOTES

TOLERANCES ON DIMENSIONS, UNLESS OTHERWISE NOTED ARE:
SAWED, SHEARED AND GAS CUT EDGES ($\pm 0.030"$)
DRILLED AND GAS CUT HOLES ($\pm 0.030"$) - NO CONING OF HOLES
LASER CUT EDGES AND HOLES ($\pm 0.010"$) - NO CONING OF HOLES
BENDS AND ANGLES ARE $\pm 1/2$ DEGREE
ALL OTHER MACHINING ($\pm 0.030"$)
ALL OTHER ASSEMBLY ($\pm 0.060"$)

PATENT INFORMATION: WWW.SITEPRO1.COM/PATENTS

PROPRIETARY NOTE:
THE DATA AND TECHNIQUES CONTAINED IN THIS DRAWING ARE PROPRIETARY INFORMATION OF VALMONT INDUSTRIES AND CONSIDERED A TRADE SECRET. ANY USE OR DISCLOSURE WITHOUT THE CONSENT OF VALMONT INDUSTRIES IS STRICTLY PROHIBITED.

DESCRIPTION
14' FLEX FORTRESS™ QUAD-PLATFORM MOUNT
WITH SUPPORT RAIL
(NO PIPE/HARDWARE)

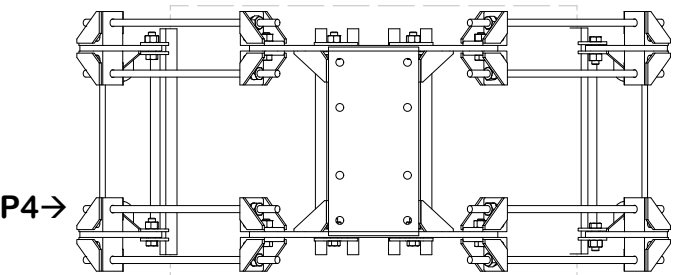
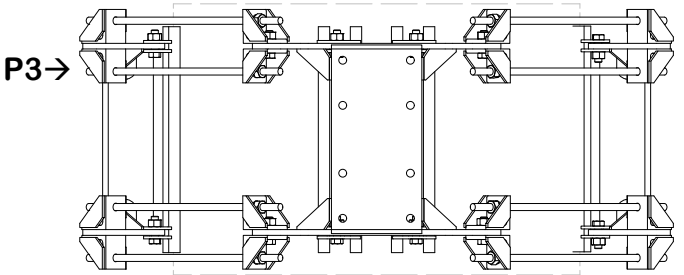
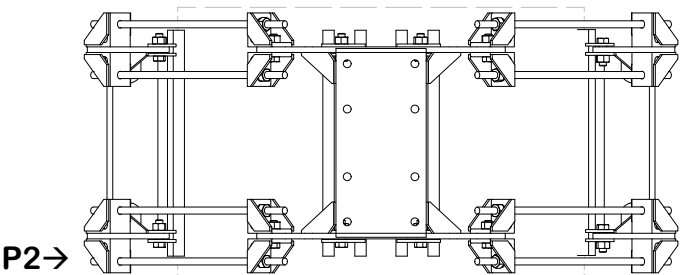
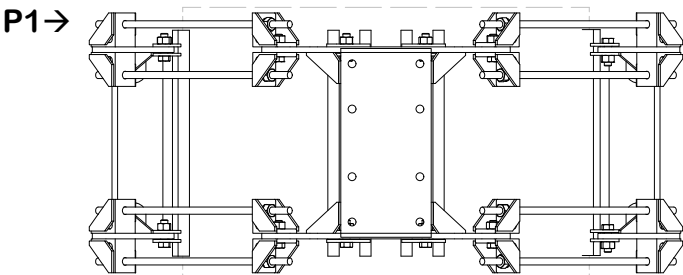
CPD NO. SP1		DRAWN BY ADB 1/8/2025		ENG. APPROVAL 1/17/2025	
CLASS 87	SUB 02	DRAWING USAGE CUSTOMER		CHECKED BY JET 1/17/2025	



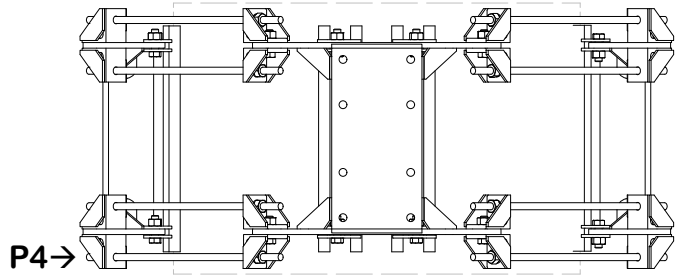
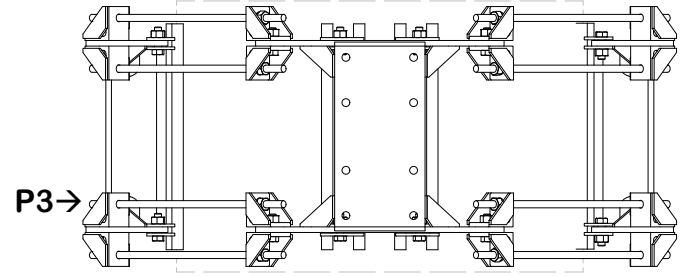
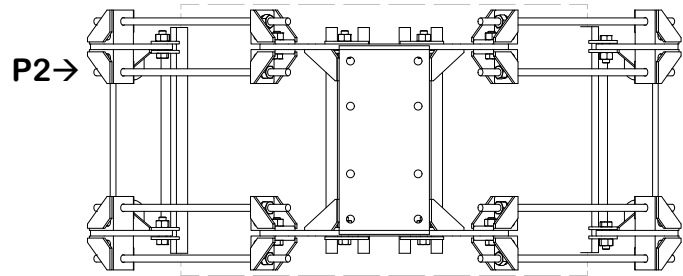
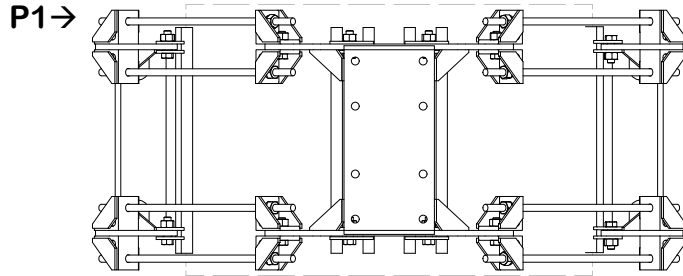
Engineering
Support Team:
sp1engineering@valmont.com

PART NO. FLX4-HD	
DWG. NO. FX4P14-NPNH	

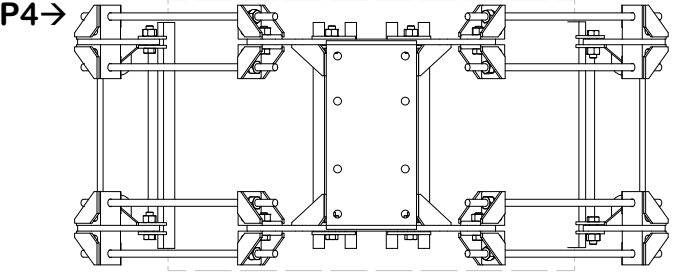
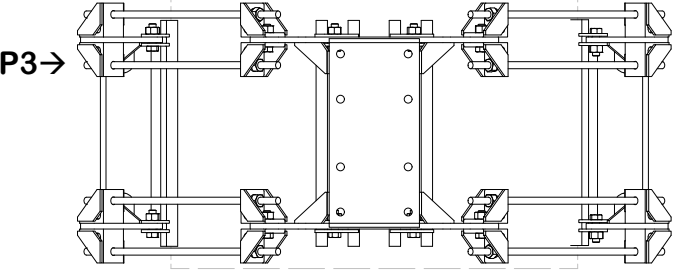
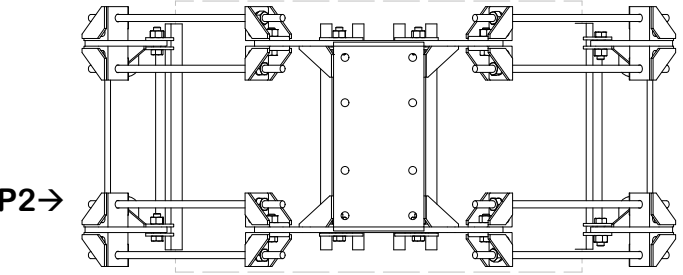
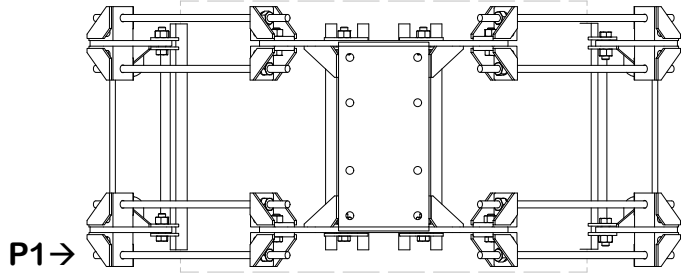
INSTALL ORDER



INITIAL TIGHTENING



FINAL TIGHTENING



TOLERANCE NOTES

TOLERANCES ON DIMENSIONS, UNLESS OTHERWISE NOTED ARE:
SAWED, SHEARED AND GAS CUT EDGES ($\pm 0.030"$)
DRILLED AND GAS CUT HOLES ($\pm 0.030"$) - NO CONING OF HOLES
LASER CUT EDGES AND HOLES ($\pm 0.010"$) - NO CONING OF HOLES
BENDS AND ANGLES ARE $\pm 1/2$ DEGREE
ALL OTHER MACHINING ($\pm 0.030"$)
ALL OTHER ASSEMBLY ($\pm 0.060"$)

PATENT INFORMATION: WWW.SITEPRO1.COM/PATENTS

PROPRIETARY NOTE:
THE DATA AND TECHNIQUES CONTAINED IN THIS DRAWING ARE PROPRIETARY INFORMATION OF VALMONT INDUSTRIES AND CONSIDERED A TRADE SECRET. ANY USE OR DISCLOSURE WITHOUT THE CONSENT OF VALMONT INDUSTRIES IS STRICTLY PROHIBITED.

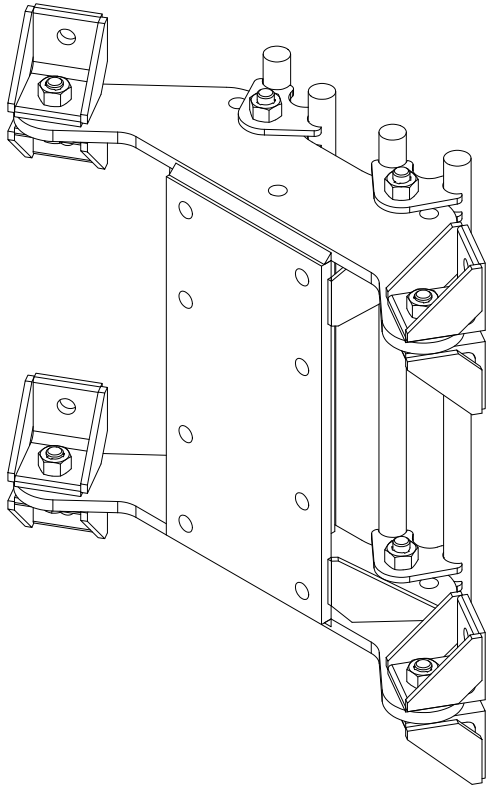
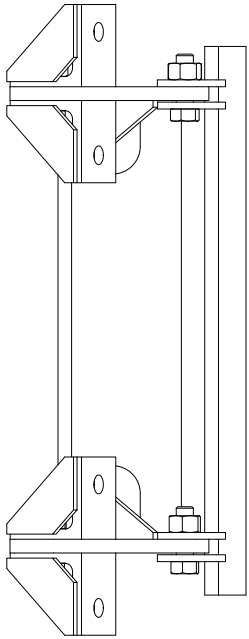
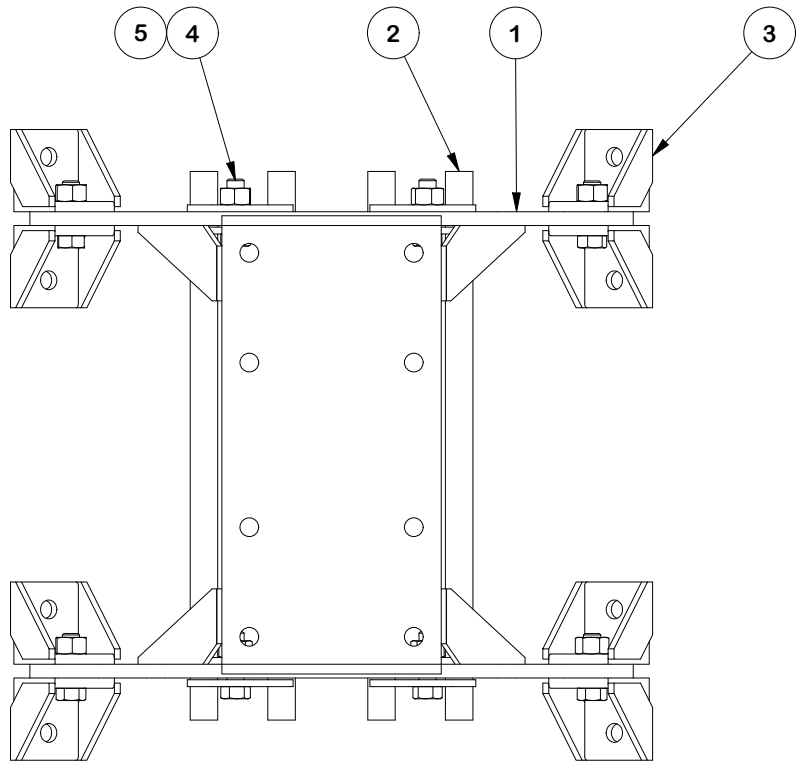
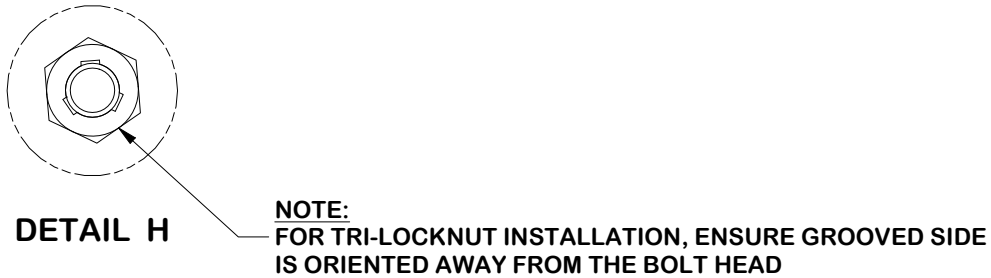
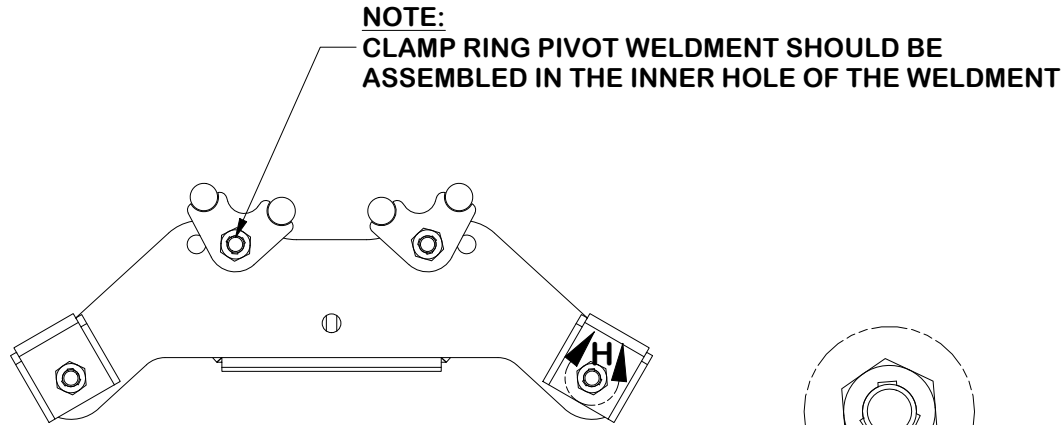
DESCRIPTION
14' FLEX FORTRESS™ QUAD-PLATFORM MOUNT
WITH SUPPORT RAIL
(NO PIPE/HARDWARE)

CPD NO. SP1		DRAWN BY ADB 1/8/2025	ENG. APPROVAL 1/17/2025
CLASS 87	SUB 02	DRAWING USAGE CUSTOMER	CHECKED BY JET 1/17/2025



Engineering
Support Team:
sp1engineering@valmont.com

PART NO. FLX4-HD	PAGE 7 OF 17
DWG. NO. FX4P14-NPNH	



PARTS LIST					
ITEM	QTY	PART NO.	PART DESCRIPTION	UNIT WT.	NET WT.
1	1	X-CR-HDW	HEAVY FLEXIBLE RING MOUNT	55.25	55.25
2	2	X-CR-PW20	20" CLAMP RING PIVOT WELDMENT	11.12	22.25
3	8	X-CR-AGW	ANGLE ON WELDMENT	2.20	17.57
4	8	G5802	5/8" x 2" HDG HEX BOLT GR5	0.27	2.16
5	8	G58TRI-LNUT	5/8" HDG HEAVY 2H TRI-LOCK NUT	0.14	1.10
TOTAL WT. #					98.32

FINISH:
HOT DIP GALVANIZED.

TOLERANCE NOTES

TOLERANCES ON DIMENSIONS, UNLESS OTHERWISE NOTED ARE:
SAWED, SHEARED AND GAS CUT EDGES ($\pm 0.030"$)
DRILLED AND GAS CUT HOLES ($\pm 0.030"$) - NO CONING OF HOLES
LASER CUT EDGES AND HOLES ($\pm 0.010"$) - NO CONING OF HOLES
BENDS AND ANGLES ARE $\pm 1/2$ DEGREE
ALL OTHER MACHINING ($\pm 0.030"$)
ALL OTHER ASSEMBLY ($\pm 0.060"$)

PATENT INFORMATION: WWW.SITEPRO1.COM/PATENTS

PROPRIETARY NOTE:
THE DATA AND TECHNIQUES CONTAINED IN THIS DRAWING ARE PROPRIETARY INFORMATION OF VALMONT INDUSTRIES AND CONSIDERED A TRADE SECRET. ANY USE OR DISCLOSURE WITHOUT THE CONSENT OF VALMONT INDUSTRIES IS STRICTLY PROHIBITED.

DESCRIPTION
14' FLEX FORTRESS™ QUAD-PLATFORM MOUNT
WITH SUPPORT RAIL
(NO PIPE/HARDWARE)

CPD NO. SP1		DRAWN BY ADB 1/8/2025		ENG. APPROVAL 1/17/2025	
CLASS 87	SUB 02	DRAWING USAGE CUSTOMER		CHECKED BY JET	1/17/2025

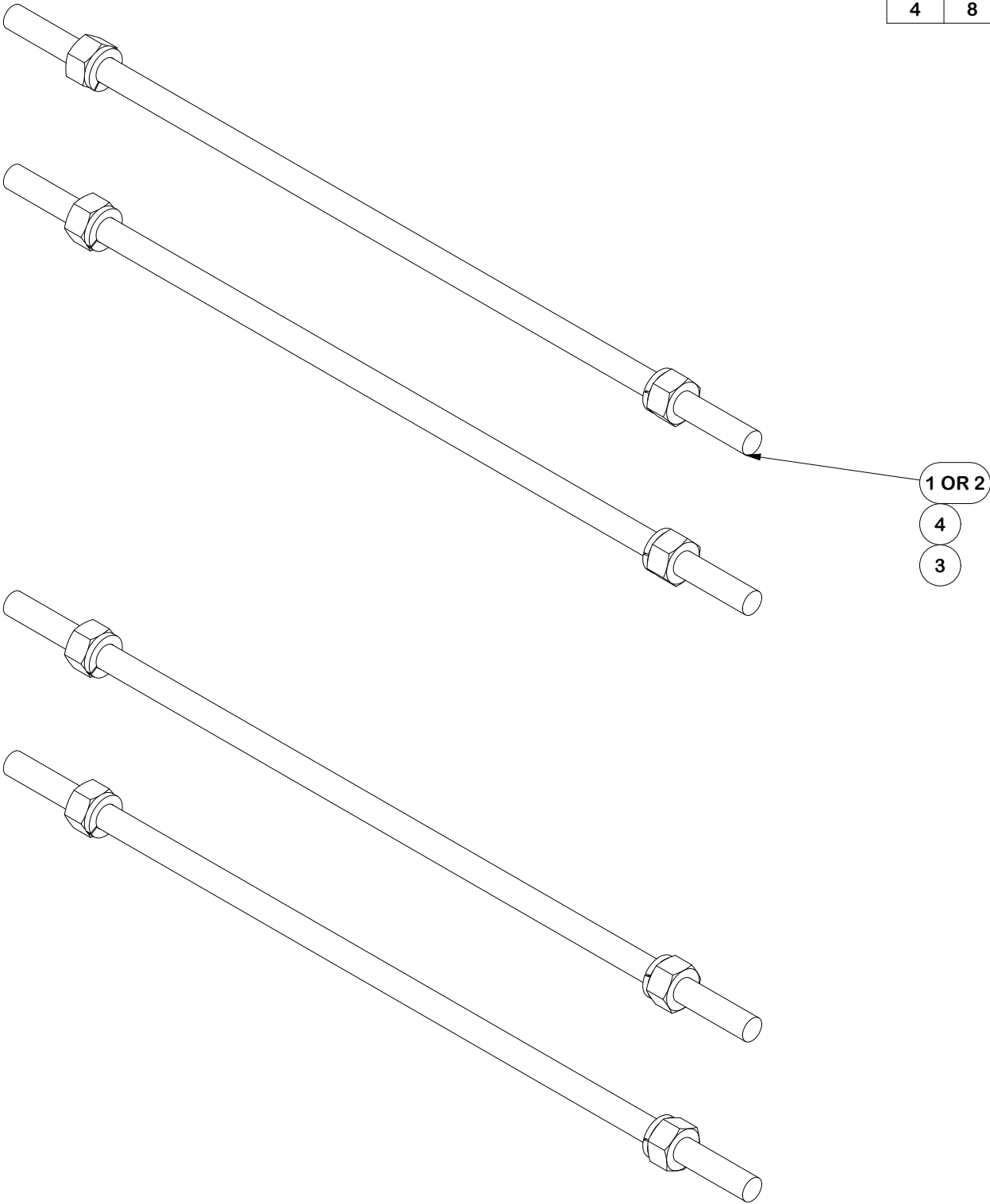


Engineering
Support Team:
sp1engineering@valmont.com

A valmont COMPANY

PART NO. FLX-HDSS	PAGE 8 OF 17
DWG. NO. FX4P14-NPNH	

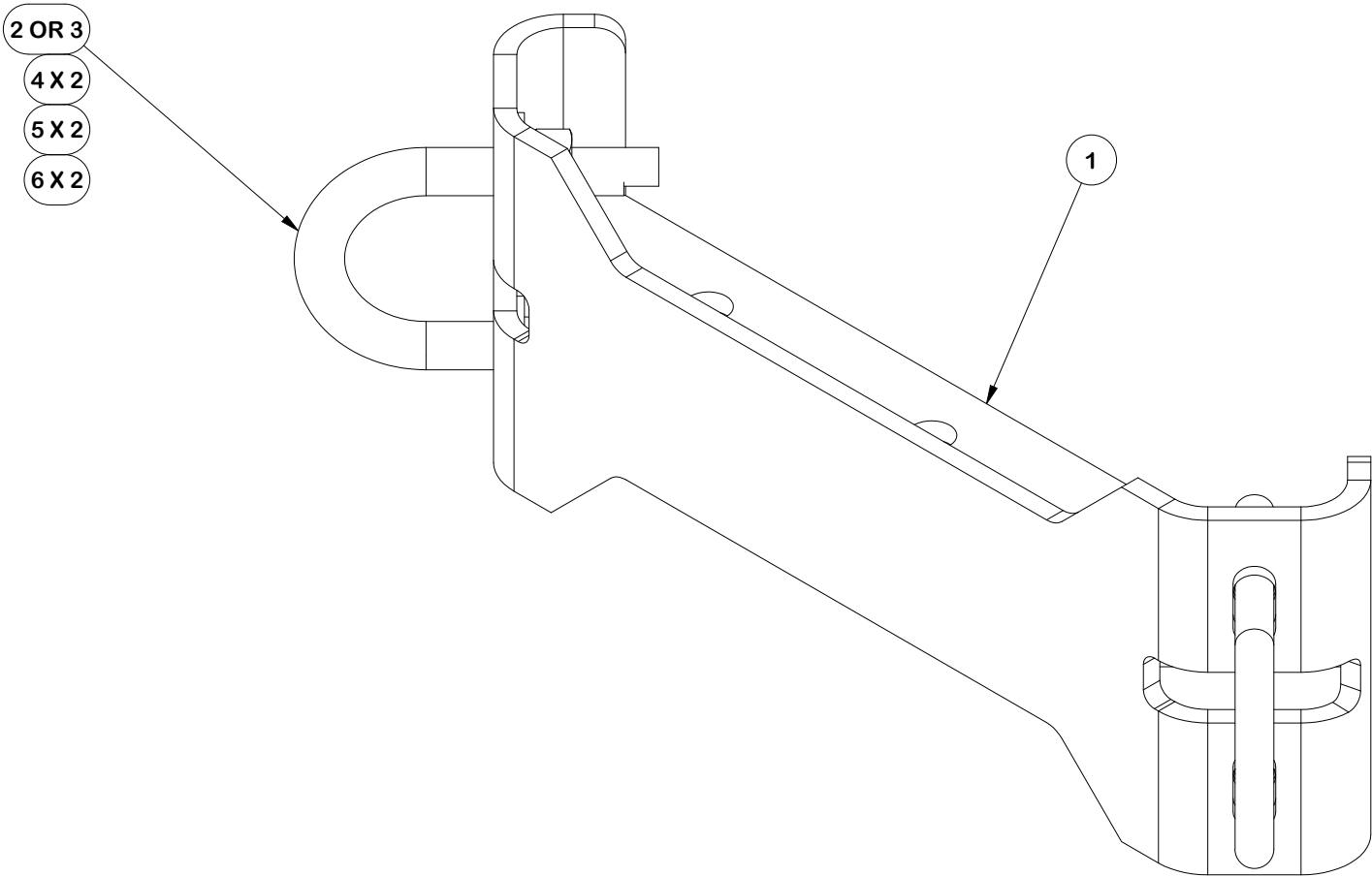
PARTS LIST					
ITEM	QTY	PART NO.	PART DESCRIPTION	UNIT WT.	NET WT.
1	4	G58R-48	5/8" X 48" GALV THREADED ROD	4.39	17.56
2	4	G58R-24	5/8" X 24" THREADED ROD (HDG.)	2.22	8.87
3	8	G58LW	5/8" HDG LOCKWASHER	0.03	0.21
4	8	G58NUT	5/8" HDG HEAVY 2H HEX NUT	0.13	1.04
TOTAL WT. #					28.30



FINISH:
HOT DIP GALVANIZED.

	<div>TOLERANCE NOTES</div> <div>TOLERANCES ON DIMENSIONS, UNLESS OTHERWISE NOTED ARE: SAWED, SHEARED AND GAS CUT EDGES ($\pm 0.030''$) DRILLED AND GAS CUT HOLES ($\pm 0.030''$) - NO CONING OF HOLES LASER CUT EDGES AND HOLES ($\pm 0.010''$) - NO CONING OF HOLES BENDS AND ANGLES ARE $\pm 1/2$ DEGREE ALL OTHER MACHINING ($\pm 0.030''$) ALL OTHER ASSEMBLY ($\pm 0.060''$)</div>				<div>DESCRIPTION</div> <div>14' FLEX FORTRESS™ QUAD-PLATFORM MOUNT WITH SUPPORT RAIL (NO PIPE/HARDWARE)</div>				<div><div><div>SITE PRO 1</div><div>A valmont COMPANY</div></div><div>Engineering Support Team: sp1engineering@valmont.com</div></div>				
	<div>PATENT INFORMATION: WWW.SITEPRO1.COM/PATENTS</div>				<div>CPD NO.</div> <div>SP1</div>		<div>DRAWN BY</div> <div>ADB 1/8/2025</div>		<div>ENG. APPROVAL</div> <div>1/17/2025</div>		<div>PART NO.</div> <div>HDRM-HW</div>		<div>PAGE</div> <div>9 OF 17</div>
	<div>PROPRIETARY NOTE: THE DATA AND TECHNIQUES CONTAINED IN THIS DRAWING ARE PROPRIETARY INFORMATION OF VALMONT INDUSTRIES AND CONSIDERED A TRADE SECRET. ANY USE OR DISCLOSURE WITHOUT THE CONSENT OF VALMONT INDUSTRIES IS STRICTLY PROHIBITED.</div>				<div>CLASS</div> <div>87</div>	<div>SUB</div> <div>02</div>	<div>DRAWING USAGE</div> <div>CUSTOMER</div>		<div>CHECKED BY</div> <div>JET 1/17/2025</div>		<div>DWG. NO.</div> <div>FX4P14-NPNH</div>		

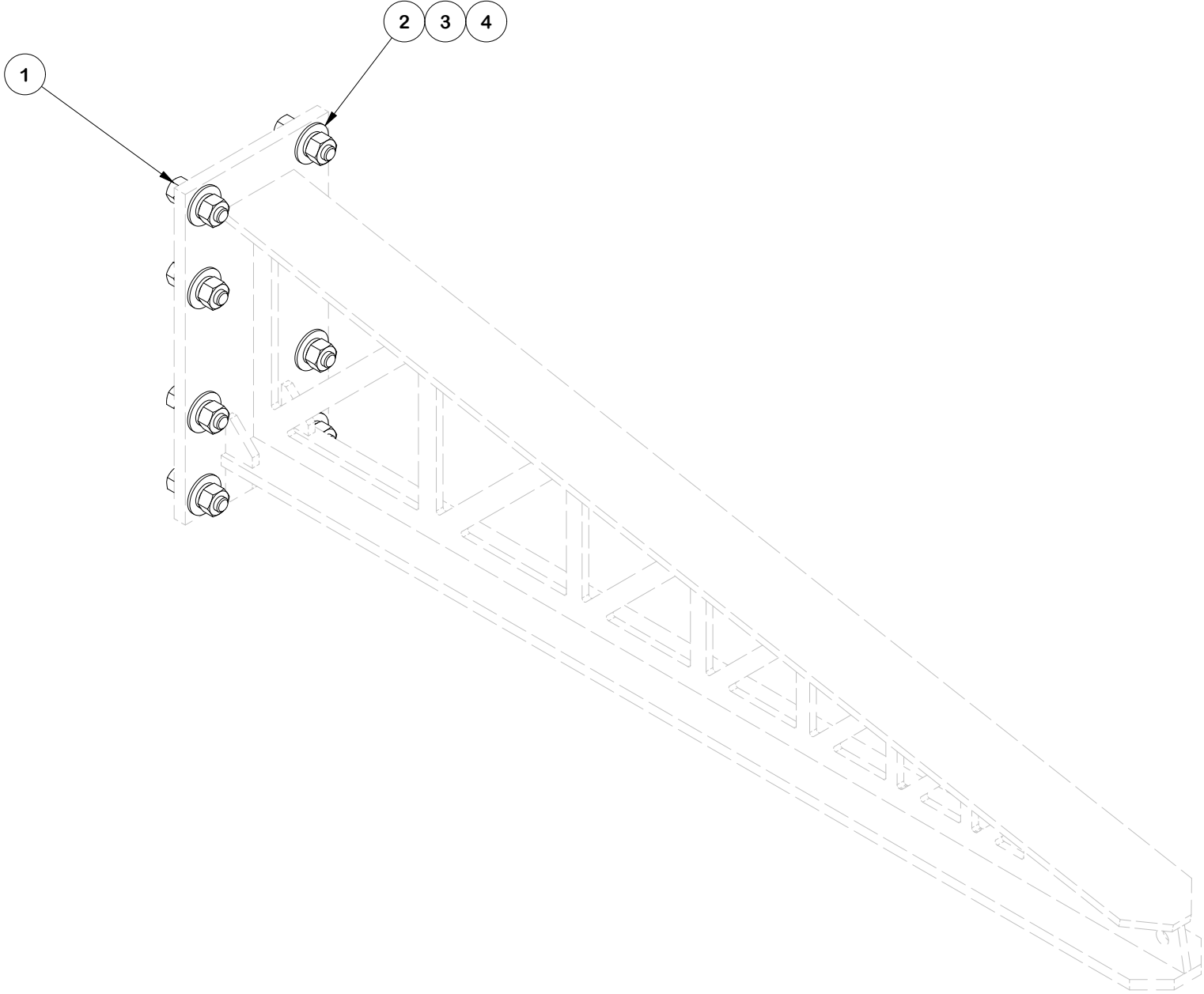
PARTS LIST						
ITEM	QTY	PART NO.	PART DESCRIPTION	LENGTH	UNIT WT.	NET WT.
1	1	X-F4PHRW	CORNER WELDMENT FOR 4-SIDED FORTRESS PLATFORM HADNRail KITS	17 3/8 in	19.32	19.32
2	2	X-UB5300	5/8" X 3" X 5-1/4" X 2-1/2" U-BOLT	5 1/4 in	1.22	2.43
3	2	X-UB5258	5/8 X 2-5/8" X 4-1/2" X 2" U-BOLT	4 1/2 in	1.06	2.12
4	4	G58FW	5/8" HDG USS FLATWASHER	1/8 in	0.07	0.28
5	4	G58LW	5/8" HDG LOCKWASHER		0.03	0.10
6	4	G58NUT	5/8" HDG HEAVY 2H HEX NUT		0.13	0.52
					TOTAL WT. #	24.78



FINISH:
HOT DIP GALVANIZED.

	<div>TOLERANCE NOTES</div> <div>TOLERANCES ON DIMENSIONS, UNLESS OTHERWISE NOTED ARE: SAWED, SHEARED AND GAS CUT EDGES (± 0.030") DRILLED AND GAS CUT HOLES (± 0.030") - NO CONING OF HOLES LASER CUT EDGES AND HOLES (± 0.010") - NO CONING OF HOLES BENDS AND ANGLES ARE ± 1/2 DEGREE ALL OTHER MACHINING (± 0.030") ALL OTHER ASSEMBLY (± 0.060")</div>				<div>DESCRIPTION</div> <div>14' FLEX FORTRESS™ QUAD-PLATFORM MOUNT WITH SUPPORT RAIL (NO PIPE/HARDWARE)</div>				<div><div><div>SITE PRO1</div><div>A valmont COMPANY</div></div><div>Engineering Support Team: sp1engineering@valmont.com</div></div>				
	PATENT INFORMATION: WWW.SITEPRO1.COM/PATENTS				CPD NO. SP1		DRAWN BY ADB 1/8/2025		ENG. APPROVAL 1/17/2025		PART NO. F4HR		
	PROPRIETARY NOTE: THE DATA AND TECHNIQUES CONTAINED IN THIS DRAWING ARE PROPRIETARY INFORMATION OF VALMONT INDUSTRIES AND CONSIDERED A TRADE SECRET. ANY USE OR DISCLOSURE WITHOUT THE CONSENT OF VALMONT INDUSTRIES IS STRICTLY PROHIBITED.				CLASS 87		SUB 02		DRAWING USAGE CUSTOMER		CHECKED BY JET 1/17/2025		
											DWG. NO. FX4P14-NPNH		
PAGE 10 OF 17													

PARTS LIST					
ITEM	QTY	PART NO.	PART DESCRIPTION	LENGTH	UNIT WT.
1	8	G58214	5/8" x 2-1/4" HDG HEX BOLT GR5		0.29
2	8	G58FW	5/8" HDG USS FLATWASHER	1/8 in	0.07
3	8	G58LW	5/8" HDG LOCKWASHER		0.03
4	8	G58NUT	5/8" HDG HEAVY 2H HEX NUT		0.13
TOTAL WT. #					4.14



TOLERANCE NOTES

TOLERANCES ON DIMENSIONS, UNLESS OTHERWISE NOTED ARE:
SAWED, SHEARED AND GAS CUT EDGES ($\pm 0.030"$)
DRILLED AND GAS CUT HOLES ($\pm 0.030"$) - NO CONING OF HOLES
LASER CUT EDGES AND HOLES ($\pm 0.010"$) - NO CONING OF HOLES
BENDS AND ANGLES ARE $\pm 1/2$ DEGREE
ALL OTHER MACHINING ($\pm 0.030"$)
ALL OTHER ASSEMBLY ($\pm 0.060"$)

PATENT INFORMATION: WWW.SITEPRO1.COM/PATENTS

PROPRIETARY NOTE:
THE DATA AND TECHNIQUES CONTAINED IN THIS DRAWING ARE PROPRIETARY INFORMATION OF VALMONT INDUSTRIES AND CONSIDERED A TRADE SECRET. ANY USE OR DISCLOSURE WITHOUT THE CONSENT OF VALMONT INDUSTRIES IS STRICTLY PROHIBITED.

DESCRIPTION
14' FLEX FORTRESS™ QUAD-PLATFORM MOUNT
WITH SUPPORT RAIL
(NO PIPE/HARDWARE)

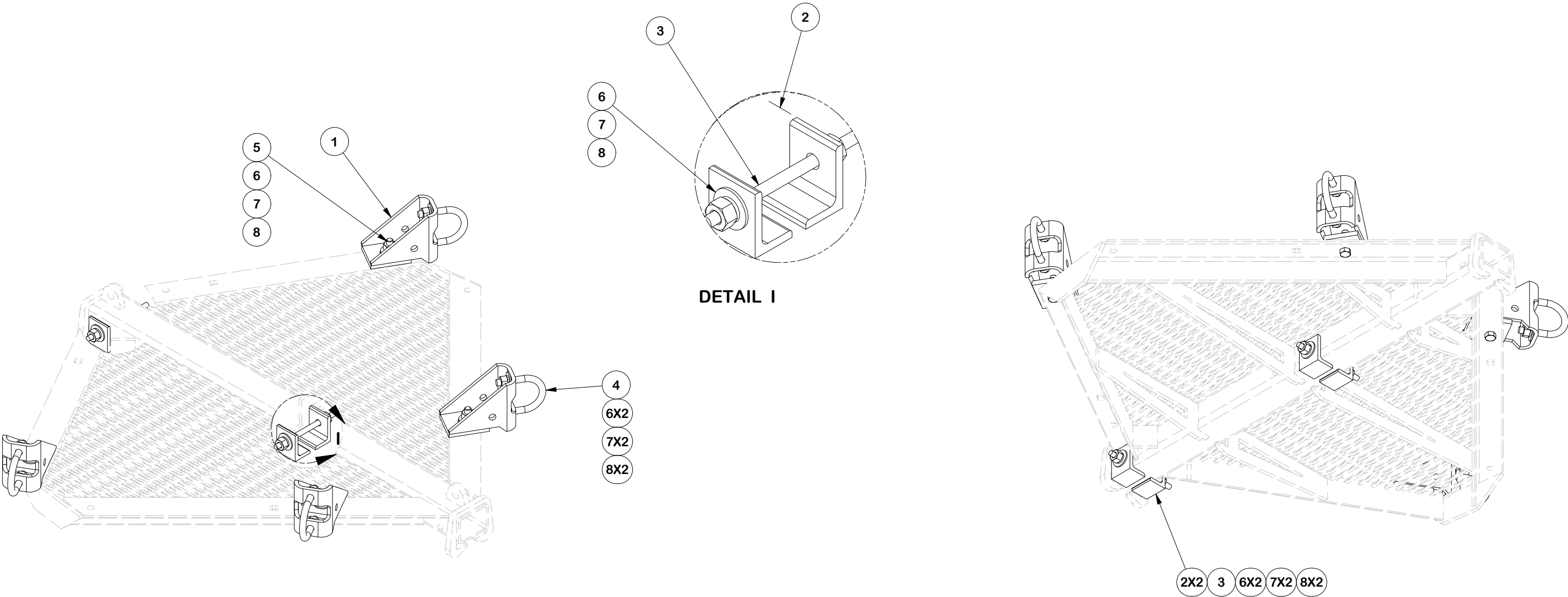
CPD NO. SP1		DRAWN BY ADB 1/8/2025	ENG. APPROVAL 1/17/2025
CLASS 87	SUB 02	DRAWING USAGE CUSTOMER	CHECKED BY JET 1/17/2025



Engineering
Support Team:
sp1engineering@valmont.com

PART NO. LPPSA-HW	PAGE 11 OF 17
DWG. NO. FX4P14-NPNH	

PARTS LIST						
ITEM	QTY	PART NO.	PART DESCRIPTION	LENGTH	UNIT WT.	NET WT.
1	4	X-LPP-PC	FACE PIPE CONNECTION BRACKET FORTRESS PLATFORM		7.01	28.04
2	4	X-LPP-A7	CORNER WELDMENT ATTACHMENT ANGLE	2 1/2 in	1.27	5.08
3	2	G12R-8	1/2" x 8" THREADED ROD (HDG.)		0.45	0.89
4	4	X-UB5304	5/8" X 3" X 4-1/4" X 2-1/2" U-BOLT	4 1/4 in	1.03	4.13
5	4	G58214	5/8" x 2-1/4" HDG HEX BOLT GR5		0.29	1.17
6	16	G58FW	5/8" HDG USS FLATWASHER	1/8 in	0.07	1.13
7	16	G58LW	5/8" HDG LOCKWASHER		0.03	0.42
8	16	G58NUT	5/8" HDG HEAVY 2H HEX NUT		0.13	2.08
					TOTAL WT. #	42.70



REPRESENTATION VIEW FOR
3-SIDED FORTRESS

TOLERANCE NOTES

TOLERANCES ON DIMENSIONS, UNLESS OTHERWISE NOTED ARE:
SAWED, SHEARED AND GAS CUT EDGES ($\pm 0.030"$)
DRILLED AND GAS CUT HOLES ($\pm 0.030"$) - NO CONING OF HOLES
LASER CUT EDGES AND HOLES ($\pm 0.010"$) - NO CONING OF HOLES
BENDS AND ANGLES ARE $\pm 1/2$ DEGREE
ALL OTHER MACHINING ($\pm 0.030"$)
ALL OTHER ASSEMBLY ($\pm 0.060"$)

PATENT INFORMATION: WWW.SITEPRO1.COM/PATENTS

PROPRIETARY NOTE:
THE DATA AND TECHNIQUES CONTAINED IN THIS DRAWING ARE PROPRIETARY INFORMATION OF VALMONT INDUSTRIES AND CONSIDERED A TRADE SECRET. ANY USE OR DISCLOSURE WITHOUT THE CONSENT OF VALMONT INDUSTRIES IS STRICTLY PROHIBITED.

DESCRIPTION
14' FLEX FORTRESS™ QUAD-PLATFORM MOUNT
WITH SUPPORT RAIL
(NO PIPE/HARDWARE)

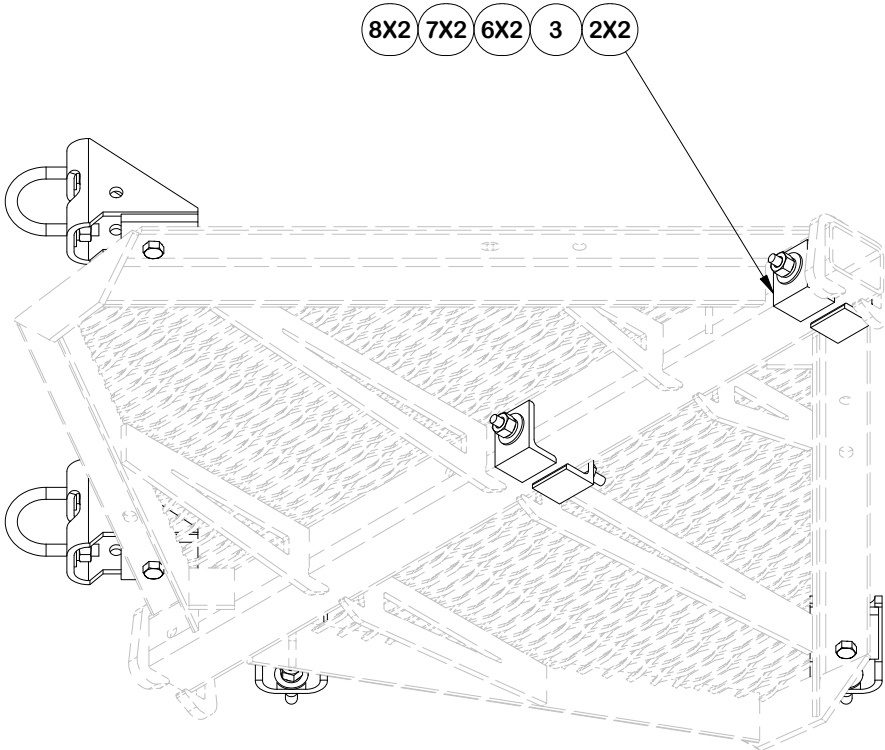
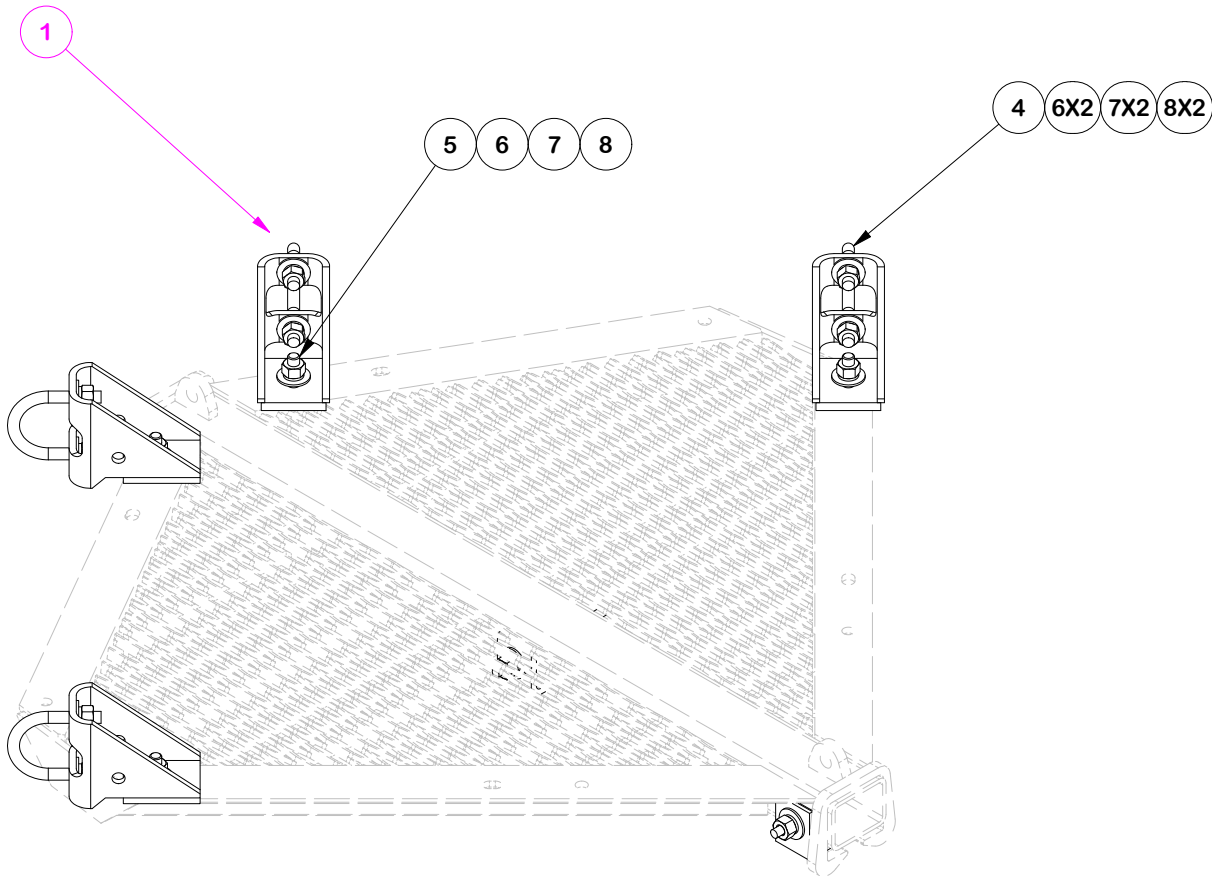
CPD NO. SP1		DRAWN BY ADB 1/8/2025		ENG. APPROVAL 1/17/2025	
CLASS 87	SUB 02	DRAWING USAGE CUSTOMER		CHECKED BY JET 1/17/2025	



Engineering
Support Team:
sp1engineering@valmont.com

PART NO. FCWHW	PAGE 12 OF 17
DWG. NO. FX4P14-NPNH	

NOTE: FOR 4-SIDED ASSEMBLY, ONLY POSITION OF FACE PIPE CONNECTION BRACKET CHANGES



REPRESENTATION VIEW FOR
4-SIDED FORTRESS

TOLERANCE NOTES

TOLERANCES ON DIMENSIONS, UNLESS OTHERWISE NOTED ARE:
SAWED, SHEARED AND GAS CUT EDGES ($\pm 0.030"$)
DRILLED AND GAS CUT HOLES ($\pm 0.030"$) - NO CONING OF HOLES
LASER CUT EDGES AND HOLES ($\pm 0.010"$) - NO CONING OF HOLES
BENDS AND ANGLES ARE $\pm 1/2$ DEGREE
ALL OTHER MACHINING ($\pm 0.030"$)
ALL OTHER ASSEMBLY ($\pm 0.060"$)

PATENT INFORMATION: WWW.SITEPRO1.COM/PATENTS

PROPRIETARY NOTE:
THE DATA AND TECHNIQUES CONTAINED IN THIS DRAWING ARE PROPRIETARY INFORMATION OF VALMONT INDUSTRIES AND CONSIDERED A TRADE SECRET. ANY USE OR DISCLOSURE WITHOUT THE CONSENT OF VALMONT INDUSTRIES IS STRICTLY PROHIBITED.

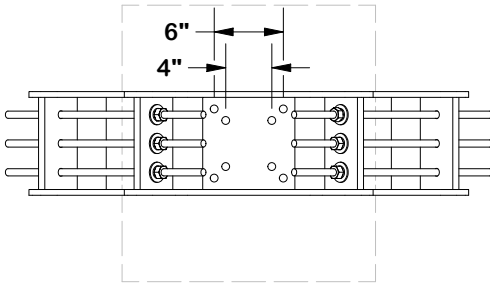
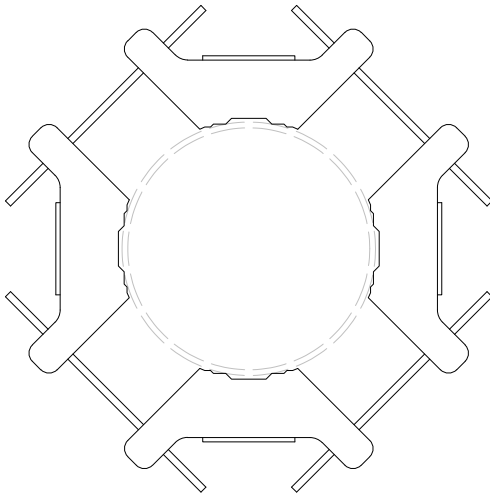
DESCRIPTION
14' FLEX FORTRESS™ QUAD-PLATFORM MOUNT
WITH SUPPORT RAIL
(NO PIPE/HARDWARE)

CPD NO. SP1		DRAWN BY ADB 1/8/2025		ENG. APPROVAL 1/17/2025	
CLASS 87	SUB 02	DRAWING USAGE CUSTOMER		CHECKED BY JET 1/17/2025	

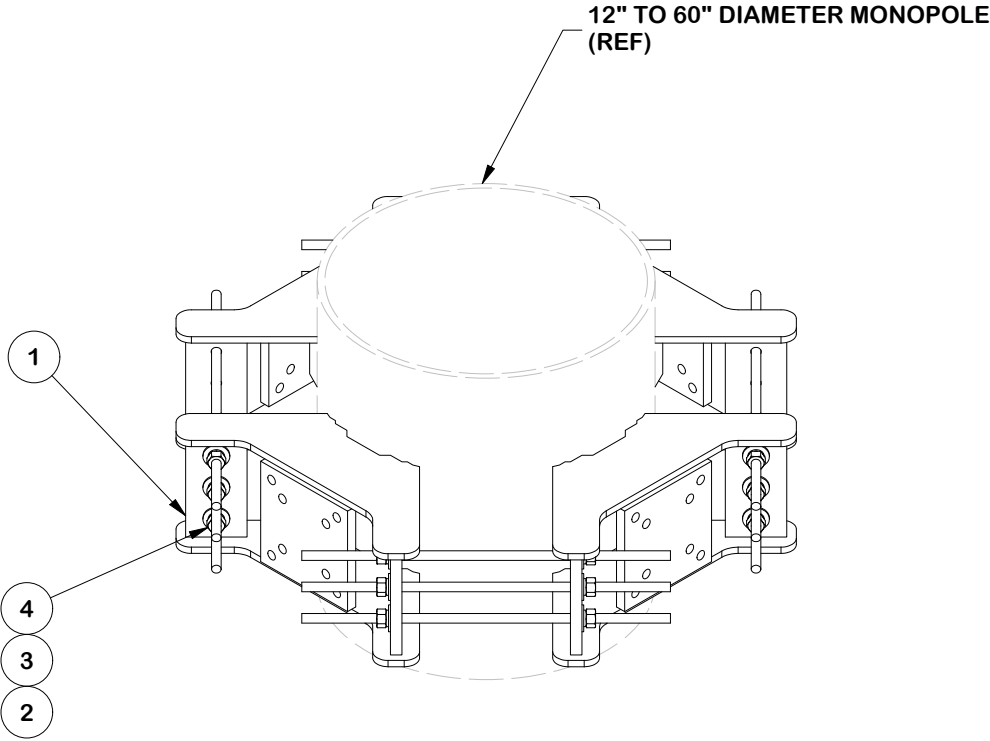


Engineering
Support Team:
sp1engineering@valmont.com

PART NO. FCWHW	
DWG. NO. FX4P14-NPNH	

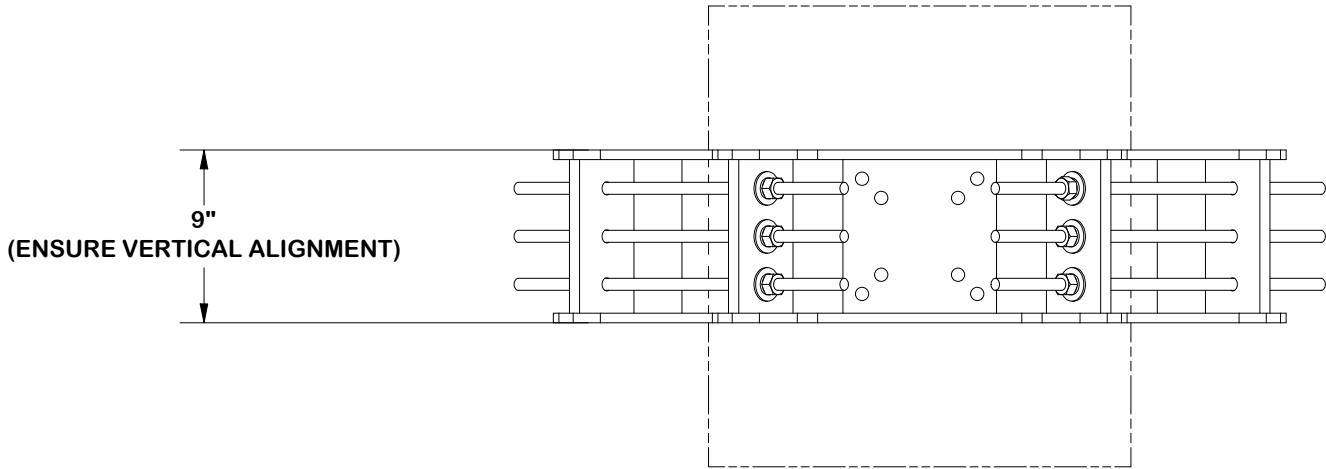
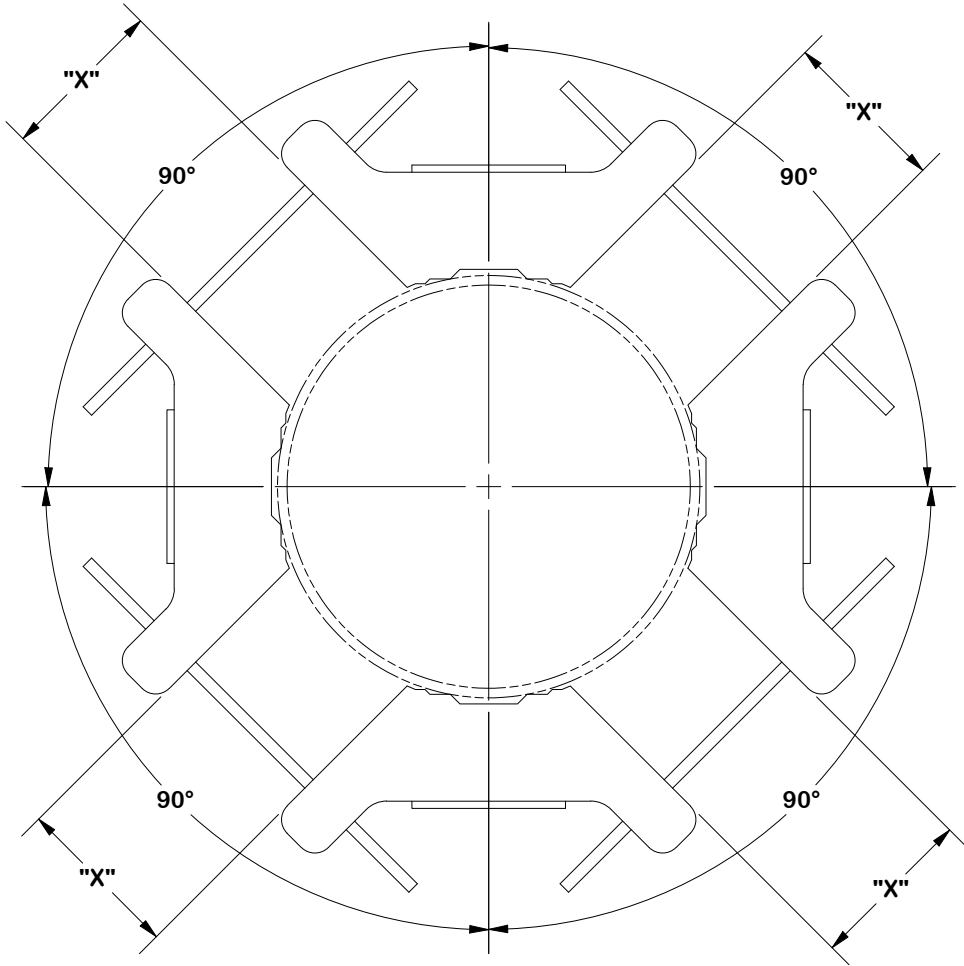


PARTS LIST						
ITEM	QTY	PART NO.	PART DESCRIPTION	LENGTH	UNIT WT.	NET WT.
1	4	X-UQB4	QUAD BRACKET WELDMENT		61.80	247.19
2	24	G58FW	5/8" HDG USS FLATWASHER	1/8 in	0.07	1.69
3	24	G58LW	5/8" HDG LOCKWASHER		0.03	0.63
4	24	G58NUT	5/8" HDG HEAVY 2H HEX NUT		0.13	3.12
5	12	G58R-48	5/8" X 48" THREADED ROD (HDG.)		4.43	53.19
6	12	G58R-24	5/8" X 24" THREADED ROD (HDG.)		2.22	26.60
					TOTAL WT. #	332.41

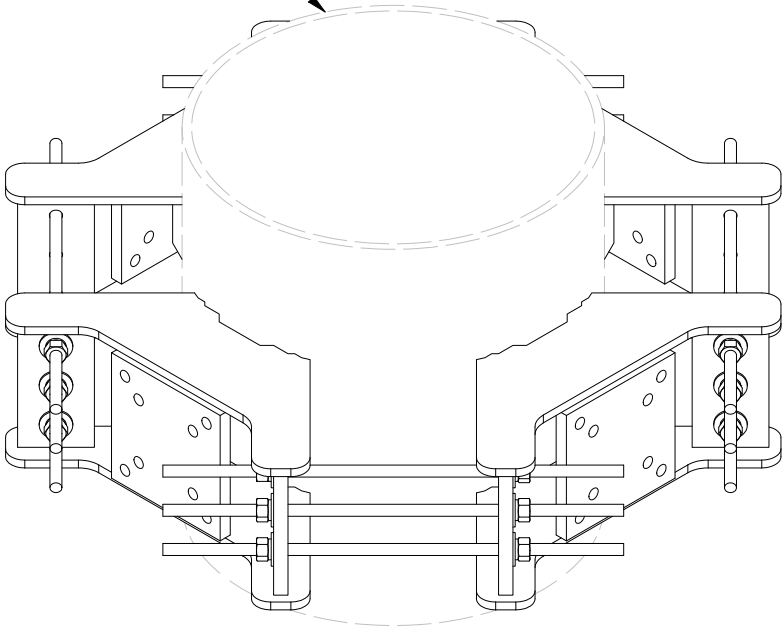


					<div>TOLERANCE NOTES</div> <div>TOLERANCES ON DIMENSIONS, UNLESS OTHERWISE NOTED ARE: SAWED, SHEARED AND GAS CUT EDGES ($\pm 0.030''$) DRILLED AND GAS CUT HOLES ($\pm 0.030''$) - NO CONING OF HOLES LASER CUT EDGES AND HOLES ($\pm 0.010''$) - NO CONING OF HOLES BENDS ARE $\pm 1/2$ DEGREE ALL OTHER MACHINING ($\pm 0.030''$) ALL OTHER ASSEMBLY ($\pm 0.060''$)</div> <div>PROPRIETARY NOTE: THE DATA AND TECHNIQUES CONTAINED IN THIS DRAWING ARE PROPRIETARY INFORMATION OF VALMONT INDUSTRIES AND CONSIDERED A TRADE SECRET. ANY USE OR DISCLOSURE WITHOUT THE CONSENT OF VALMONT INDUSTRIES IS STRICTLY PROHIBITED.</div>					<div>DESCRIPTION</div> <div>14' FLEX FORTRESS™ QUAD-PLATFORM MOUNT WITH SUPPORT RAIL (NO PIPE/HARDWARE)</div>					<div><div><div>SITE PRO</div><div>1</div></div><div>Engineering Support Team: 1-888-753-7446</div><div>A valmont COMPANY</div></div> <div>Locations: New York, NY Atlanta, GA Los Angeles, CA Plymouth, IN Salem, OR Dallas, TX</div>				
C	FIXED PART WEIGHT AND CLERICAL ITEMS				4863	JET	7/10/2024	CPD NO.	DRAWN BY		ENG. APPROVAL		PART NO.		14 OF 17 PAGE				
B	ADDED INSTALLATION INFO				4863	CEK	10/20/2023	SP1	ADB 1/8/2025		1/17/2025		UQB4						
A	UQB4 revised to meet modern loading				4863	JET	6/3/2019	CLASS	SUB	DRAWING USAGE		CHECKED BY		DWG. NO.					
REV	DESCRIPTION OF REVISIONS				CPD	BY	DATE	87	02	CUSTOMER		JET 1/17/2025				FX4P14-NPNH			
REVISION HISTORY																			

NOTE:
ENSURE EQUAL DISTANCE
BETWEEN BRACKETS "X"
AND AT 90° APART



12" to 60"
O.D. POLE



REV	DESCRIPTION OF REVISIONS	CPD	BY	DATE
C	FIXED PART WEIGHT AND CLERICAL ITEMS	4863	JET	7/10/2024
B	ADDED INSTALLATION INFO	4863	CEK	10/20/2023
A	UQB4 revised to meet modern loading	4863	JET	6/3/2019
REVISION HISTORY				

TOLERANCE NOTES

TOLERANCES ON DIMENSIONS, UNLESS OTHERWISE NOTED ARE:
SAWED, SHEARED AND GAS CUT EDGES ($\pm 0.030"$)
DRILLED AND GAS CUT HOLES ($\pm 0.030"$) - NO CONING OF HOLES
LASER CUT EDGES AND HOLES ($\pm 0.010"$) - NO CONING OF HOLES
BENDS ARE $\pm 1/2$ DEGREE
ALL OTHER MACHINING ($\pm 0.030"$)
ALL OTHER ASSEMBLY ($\pm 0.060"$)

PROPRIETARY NOTE:
THE DATA AND TECHNIQUES CONTAINED IN THIS DRAWING ARE PROPRIETARY INFORMATION OF VALMONT INDUSTRIES AND CONSIDERED A TRADE SECRET. ANY USE OR DISCLOSURE WITHOUT THE CONSENT OF VALMONT INDUSTRIES IS STRICTLY PROHIBITED.

DESCRIPTION
14' FLEX FORTRESS™ QUAD-PLATFORM MOUNT
WITH SUPPORT RAIL
(NO PIPE/HARDWARE)

CPD NO. SP1		DRAWN BY ADB 1/8/2025	ENG. APPROVAL 1/17/2025
CLASS 87	SUB 02	DRAWING USAGE CUSTOMER	CHECKED BY JET 1/17/2025



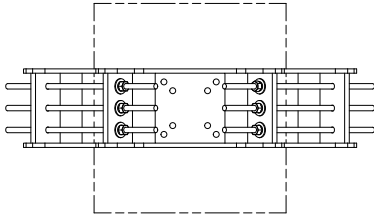
Engineering
Support Team:
1-888-753-7446

Locations:
New York, NY
Atlanta, GA
Los Angeles, CA
Plymouth, IN
Salem, OR
Dallas, TX

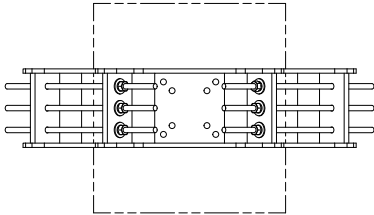
PART NO. UQB4	15 OF 17 PAGE
DWG. NO. FX4P14-NPNH	

INSTALL ORDER

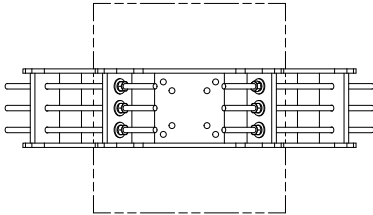
P1→



P2→

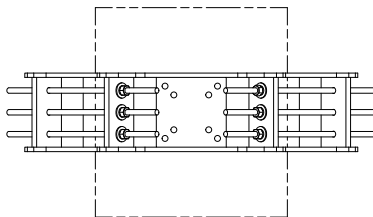


P3→

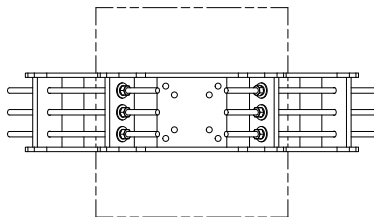


INITIAL TIGHTENING

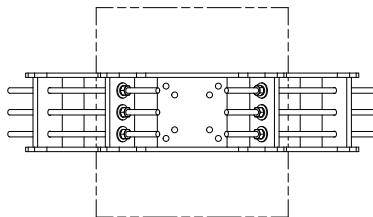
P1→



P2→

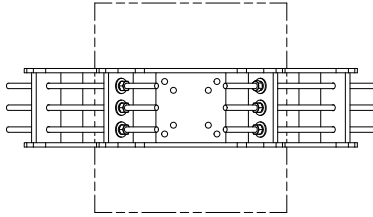


P3→

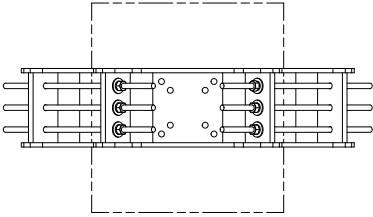


FINAL TIGHTENING

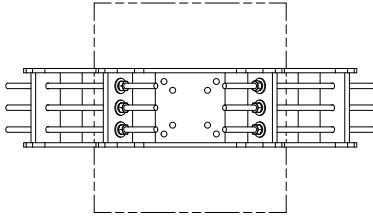
P1→



P2→



P3→



REV	DESCRIPTION OF REVISIONS	CPD	BY	DATE
C	FIXED PART WEIGHT AND CLERICAL ITEMS	4863	JET	7/10/2024
B	ADDED INSTALLATION INFO	4863	CEK	10/20/2023
A	UQB4 revised to meet modern loading	4863	JET	6/3/2019
REVISION HISTORY				

TOLERANCE NOTES

TOLERANCES ON DIMENSIONS, UNLESS OTHERWISE NOTED ARE:
SAWED, SHEARED AND GAS CUT EDGES ($\pm 0.030"$)
DRILLED AND GAS CUT HOLES ($\pm 0.030"$) - NO CONING OF HOLES
LASER CUT EDGES AND HOLES ($\pm 0.010"$) - NO CONING OF HOLES
BENDS ARE $\pm 1/2$ DEGREE
ALL OTHER MACHINING ($\pm 0.030"$)
ALL OTHER ASSEMBLY ($\pm 0.060"$)

PROPRIETARY NOTE:
THE DATA AND TECHNIQUES CONTAINED IN THIS DRAWING ARE PROPRIETARY INFORMATION OF VALMONT INDUSTRIES AND CONSIDERED A TRADE SECRET. ANY USE OR DISCLOSURE WITHOUT THE CONSENT OF VALMONT INDUSTRIES IS STRICTLY PROHIBITED.

DESCRIPTION
14' FLEX FORTRESS™ QUAD-PLATFORM MOUNT
WITH SUPPORT RAIL
(NO PIPE/HARDWARE)

CPD NO. SP1		DRAWN BY ADB 1/8/2025	ENG. APPROVAL 1/17/2025
CLASS 87	SUB 02	DRAWING USAGE CUSTOMER	CHECKED BY JET 1/17/2025

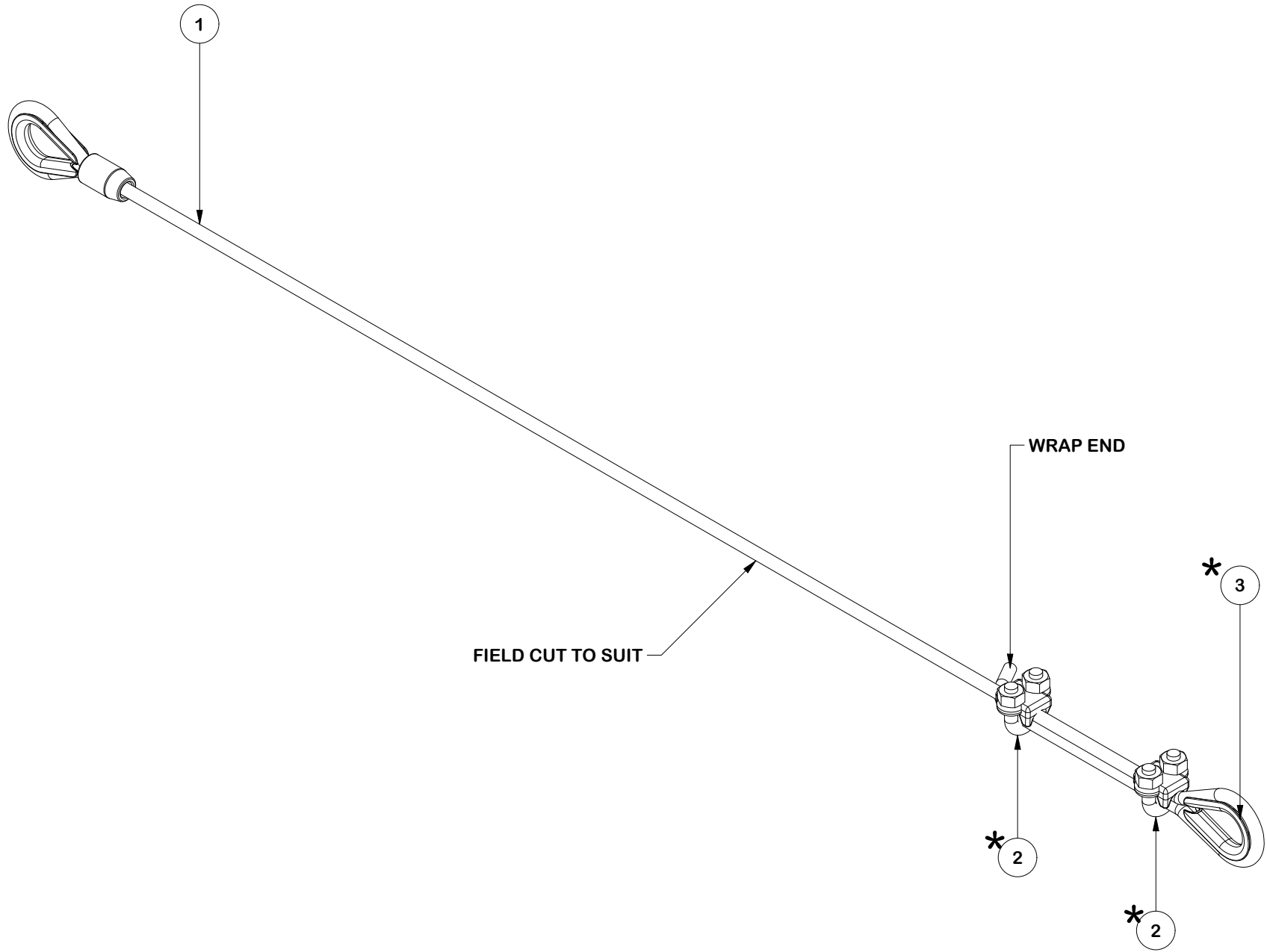


Engineering
Support Team:
1-888-753-7446


Locations:
New York, NY
Atlanta, GA
Los Angeles, CA
Plymouth, IN
Salem, OR
Dallas, TX

PART NO. UQB4	PAGE 16 OF 17
DWG. NO. FX4P14-NPNH	

PARTS LIST						
ITEM	QTY	PART NO.	PART DESCRIPTION	LENGTH	UNIT WT.	NET WT.
1	1	X-C3815	3/8" X 15'-0" CABLE W/ ONE THIMBLE SWAGED END	180 in	5.86	5.86
2	2	320153	CROSBY 3/8" WIRE ROPE CLIP		1.32	2.63
3	1	320778	CROSBY 3/8" THIMBLE		0.07	0.07
					TOTAL WT. #	8.56



* TO BE ASSEMBLED IN THE FIELD

						TOLERANCE NOTES		<div>DESCRIPTION</div> <div>14' FLEX FORTRESS™ QUAD-PLATFORM MOUNT WITH SUPPORT RAIL (NO PIPE/HARDWARE)</div>			<div><div><div>SITE PRO 1</div><div>A valmont  COMPANY</div></div><div>Locations: New York, NY Atlanta, GA Los Angeles, CA Plymouth, IN Salem, OR Dallas, TX Tampa, FL</div><div>Engineering Support Team: 1-888-753-7446</div></div>						
B		4863	CEK	10/20/2023	<div>PROPRIETARY NOTE: THE DATA AND TECHNIQUES CONTAINED IN THIS DRAWING ARE PROPRIETARY INFORMATION OF VALMONT INDUSTRIES AND CONSIDERED A TRADE SECRET. ANY USE OR DISCLOSURE WITHOUT THE CONSENT OF VALMONT INDUSTRIES IS STRICTLY PROHIBITED.</div>		CPD NO.		DRAWN BY		ENG. APPROVAL		PART NO.		17 OF 17 PAGE		
C		4863	JET	7/10/2024			SP1		ADB 1/8/2025		1/17/2025		CK-3815				
A	REVISED	4863	JET	6/3/2019			CLASS		SUB		DRAWING USAGE		CHECKED BY			DWG. NO.	
REV	DESCRIPTION OF REVISIONS	CPD	BY	DATE			87		02		CUSTOMER		JET 1/17/2025			FX4P14-NPNH	
REVISION HISTORY																	